

NCME

national
council on
measurement
in education

Annual Meeting Program

April 25–27, 2000
New Orleans, LA



NATIONAL COUNCIL ON MEASUREMENT IN EDUCATION

Sheraton New Orleans Hotel
New Orleans Marriott
Le Meridien New Orleans
New Orleans, LA
April 25–27, 2000

Future Meetings

2001 Seattle — April 11–13
2002 New Orleans — April 2–4
2003 Chicago — April 22–24
2004 San Francisco — April 6–8 (tentative)
2005 Montreal — April 12–14 (tentative)

NCME OFFICERS

President

Michael J. Kolen
University of Iowa

Vice President

John Fremer
Educational Testing Service

Past President

Edward H. Haertel
Stanford University

Executive Officer

William J. Russell
NCME

DIRECTORS

David A. Frisbie
University of Iowa

Mary Lyn Bourque
National Assessment Governing Board

Linda Crocker
University of Florida

Lorna Earl
OISE/UT

Catherine J. Welch
ACT, Inc.

Suzanne Lane
University of Pittsburgh

EDITORS

Journal of Educational Measurement	Daniel R. Eignor <i>Educational Testing Service</i>
Educational Measurement: Issues and Practice	Geri Benson <i>University of Pittsburgh</i>
NCME Newsletter	Douglas F. Becker <i>Riverside Publishing Company</i>
ITEMS	Michael J. Zieky <i>Educational Testing Service</i>
Website Editor	Delwyn L. Harnish <i>University of Illinois</i>

2000 ANNUAL MEETING CHAIRS

Program Chair	Deborah J. Harris <i>ACT, Inc.</i>
Program Design	Michael Rasmusson <i>ACT, Inc.</i>
Training Sessions	Ratna Nandakumar <i>University of Delaware</i>
Run/Walk Co-Directors	Ronald A. Berk <i>Johns Hopkins University</i> Valerie Andrews <i>Southern Runner Productions</i>
Secretarial Support	Sarah J. Logan Julie F. Cox

PROPOSAL REVIEWERS

James Algina
Linda Althouse
David O. Anderson
Robert Ankenmann
Tim Ansley
Ethan Arenson
Heibatollah Baghi
Jae-Chun Ban
Deborah Bandalos
Rebecca A. Baranowski
Sheila Barron
Philip Bashook
Doug Becker
Gordon Benson
Betty Bergstrom
Bruce Biskin
Brian Bontempo
Mary Lyn Bourque
Krista Breithaupt
Hunter Breland
David V. Budescu
Alan Bugbee
Tim Burden
Michael Burke
Patricia Busk
Steve Buyske
Jane Canner
JoEllen Carlson
Chih-Hung Chang
Seung W. Choi
Joseph C. Ciechalski
Gregory J. Cizek
Brian Clauser
Allan Cohen
Dean Colton
Jill Crouse
Marian E. Dabney
Mark L. Davison
C. Mitchell Dayton
Ayres D'Costa
Ralph DeAyala
Andre F. De Champlain
Robert F. Dedrick
Deanna M. De'Liberto
Christine DeMars
Gerald E. DeMauro
Charles DePascale
Alan Dillingham

Gerry Dillon
Barbara G. Dodd
Allen Doolittle
Jane Faggen
William Farmer
Helmuts A. Feifs
James Fidler
Shawn Fitzgerald
Anne R. Fitzpatrick
R.B. Fletcher
Claudia Flowers
Valerie Greaud Folk
Robert A. Forsyth
Ann W. French
Chuck Friedman
Robert Gable
Naomi Gafni
Xiaohong Gao
Kurt F. Geisinger
Mark J. Gierl
Elizabeth Gittman
Doug Glasnapp
Marna Golub-Smith
Steven Gorman
Bert F. Green, Jr.
Ross Green
Brian Habing
Vinni M. Hall
Christa Hansen
Brad Hanson
Dwight Harley
Mike Harwell
Aftab Hassan
Dianne Henderson
Amy Hendrickson
Sara S. Hennings
Steve Henry
Thomas R. Henzel
Mike Herrick
Kaaren I. Hoffman
Carolyn Huie Hofstetter
Catherine M. Hombro
Cathy Horn
Yi-Ming Hsu
Chi-Yu Huang
Kristen L. Huff
Edith L. Hunsberger
Kyoko Ito

Carrolyn Iwamoto
Ying Hong Jiang
John Kalohn
Aki Kamata
Michael Kane
Tim Z. Keith
Seock-Ho Kim
Simon Kim
Gage Kingsbury
Mary M. Kino
Beverly M. Klecker
Clarence Kreiter
Jeffrey D. Kromrey
Charles Kunce
Susan N. Kushner
Marc LaBella
Tony Lam
Suzanne Lane
Tom Langenfeld
Ida Lawrence
Guemlin Lee
Won-Chan Lee
Joanne Lenke
Valerie Link
Robert Lissitz
Samuel A. Livingston
Sherry Macaul
George Macready
Nancy A. Maihoff
Susan Maller
Jim Manhart
George A. Marcoulides
Melissa J. Margolis
Dara Martinovich-Barhite
John Mattar
Sam Mayo
Joy McLarty
Robert F. McMorris
Alan Mead
Michelle Mengeling
Hillary Michaels
Tim Miller
David Miner
David Mittelholtz
Alan Moore
Patricia Muenzen
Eugene Muller
Eiji Muraki

Richard W. Naccarato
Ratna Nandakumar
Candace Noble
Julie Noble
MD Hafidz Omar
T.C. Oshima
Chung Park
Cynthia Parshall
Carole Perlman
Nancy S. Petersen
Mary Pommerich
Mark Pomplun
W. James Popham
Maria Potenza
James Powell
Mark Price
Sen Qi
Nambury S. Raju
Steve Rattenborg
Mark Raymond
Mark Reckase
Lynda Reese
Shungwon Ro
James S. Roberts
Michael C. Rodriguez
Edward Roeber
Gerald Rosen
Maria Araceli Ruiz-Primo
Katherine Ryan
Laurel Sample
Shlomo Sawilowsky

Richard Sawyer
Lyn Schaefer
Gary Schaeffer
Stephen J. Schellenberg
Cynthia B. Schmeiser
A. Schmitt
Katherine Schnepel
Christine Schram
Mahna T. Schwager
Tae-Je Seong
Mark D. Shermis
Steve Siera
Stephen Sireci
Gary Skaggs
Philip Smith
Richard M. Smith
Alan Solomon
Kevin F. Spratt
Brian Stecher
Hoi K. Suen
Kyoko Suzuki
James Swanson
Deborah Switzer
M. Szymczuk
Richard Tate
Kurt T. Taube
Susan Thomas
Bruce Thompson
Tony Thompson
Ross Traub
E. Roger Trent

Tsung-Hsun Tsai
Ahmet Turhan
Walter Vispoel
Cindy Walker
Robert Wall
Stephen Wall-Smith
Kris Waltman
J.J. Wang
Ning Wang
Tianyou Wang
James Martin Webb
Catherine Welch
Theodore W. Whitley
Douglas R. Whitney
Valerie Williams
David Williamson
Kathleen Wills
Phoebe Winter
Steven Wise
Dennis R. Wisnicioski
Elizabeth Witt
Richard Wolf
Ed Wolfe
Carolyn M. Wood
Kim D. Yap
Qing Yi
Michael Yoes
Bokhee Yoon
Bob Ziomek
Bruno D. Zumbro

NCME Annual Meeting Training Sessions New Orleans, LA, April 25–27

Admission to training sessions is limited to ticket holders. Tickets may be obtained by writing to Training/NCME, 1230 17th Street, NW, Washington, DC 20036-3078. Please enclose payment and a self-addressed stamped envelope. Courses are subject to cancellation for insufficient registration. Some courses require advanced registration. The deadline for ordering tickets is March 20, 2000. Any tickets available at the conference will be sold on a first-come, first-served basis at the registration area in one of the convention hotels.

Thursday, April 27

8:15 A.M. – 12:15 P.M.

AA. Assessing Learning Outcomes with Performance Assessment Tasks

Presenters: Susan Thomas, IBM Corporation

Fee: \$40

The overall objective of the training session is to provide participants with an overview of the processes involved in developing and using performance assessment tasks to measure learning outcomes. The session will focus initially on the trade-offs and decision points to consider when selecting the method of assessing learning outcomes. Concepts and activities will be used to guide participants through the development of a performance assessment task, its scoring rubric, and its associated components including instructors for the task administrator. Methods of standard setting for performance assessment tasks will be described, and participants will be urged to consider ways that they can use these techniques to determine acceptable performance on the task they create.

Monday, April 24

8:30 A.M. – 4:00 P.M.

BB. Computerized Testing — Issues and Applications

Presenters: Cynthia G. Parshall, University of South Florida;
Tim Davey, Judy Spray, John Kalohn, ACT, Inc Fee: \$95

This training session will introduce participants to the field of computerized testing. Several test delivery models will be covered in detail, including: fixed computer-based testing (CBT), automated test construction for online delivery (ATC), computerized adaptive testing (CAT), and computerized classification testing (CCT). Item Response Theory (IRT) will be addressed in terms of the implications of item response models, ability estimation methods, and item selection algorithms for the administration of computerized exams. A discussion of the process of evaluating and preparing an item pool for computerized testing will also be provided. Practical exercises will be included, as will demonstrations of innovative item types and computerized tests. Participants will also receive a handbook written by the presenters that will be used as a framework for the training session material.

Monday, April 24

8:30 A.M. – 4:00 P.M.

CC. Test Equating Methods and Practices

Presenters: Michael J. Kolen, Robert J. Brennan, Iowa Testing Programs:
University of Iowa Fee: \$95

The goals of this session are for attendees to be able to understand the principles of equating, to conduct equating, and to interpret the results of equating in reasonable ways. The potential need for equating arises whenever a testing program uses multiple forms of a test that are built to the same content and statistical specifications. Equating is a statistical process that is used to adjust scores on test forms so that scores on the forms can be used interchangeably. Equating will be contrasted with related linking processes, traditional and IRT equating methodology will be described and practical issues will be discussed. The focus is on developing a conceptual understanding of equating through numerical examples and discussion of practical issues. Recent developments in equating and linking performance assessments and computerized tests will be considered. The text for the session will be the co-directors' 1995 book *Test Equating Methods and Practices*, a copy of which is included as part of the fee for the session. The session is designed for upper-level graduate students, new Ph.D.'s, testing professionals with operational or oversight responsibility for equating, and others with interest in learning about equating methods and practices. Participants should have at least one graduate course in measurement and two graduate courses in statistics.

Wednesday, April 26

2:15 – 6:15 P.M.

DD. Automated Procedure for Item Selection and Test Construction Using IRT Information

Presenters: Eduardo Cascallar, Rene Grosser, Ruth Olmsted,
Leslie Ann Bliss, Regents College; Alicia P. Schmitt, ETS

Fee: \$40

The purpose of this training session is to present and demonstrate an automated solution to practical problems in the test development process when assembling tests using Item Response Theory information functions. This particular procedure allows information to be efficiently organized, so that the test development process is facilitated. Specifically, an application incorporating spreadsheets and pivot tables was developed to operationalize the test assembly process. The spreadsheets assist the process by rank ordering items based on different criteria established a priori. Thus the selection of items is automated, replacing the more cumbersome conventional methods which are often time consuming and less efficient. In addition, pivot tables offering user interactivity provide simultaneous summary information which guides in the selection of items. The workshop structure will include a theoretical presentation, followed by a description of the automated item selection process, demonstration of the application including an interactive audience participation component, and concluding with issues addressed during an actual test assembly process. A bound manual containing material on theoretical concepts and examples of automated tables describing the process to follow, including the procedural steps recommended in the test assembly process, will be provided to each participant.

Monday, April 24

8:30 A.M – 4:30 P.M.

EE. Dimensionality Assessment

Presenters: William Stout, Louis Roussos, University of Illinois;
Instructor: Sarah Hart, University of Illinois

Fee: \$95

The purpose of this training session is to educate practitioners about the issues in test dimensionality assessment, and then to instruct participants on the current conditional covariance based methodology and dimensionality software (DIMTEST, POLY-DIMTEST, CONCOV, HCA/CCPROX, DETECT and MULTISIM). With the national emphasis on testing, it is essential that individuals responsible for constructing and analyzing standardized tests understand how to evaluate what a test is actually measuring.

Monday, April 24

8:30 A.M. – 5:00 P.M.

FF. Setting Standards Using the Body of Work Method

Presenters: Neal Kingston, Stuart Kahl, Kevin Sweeney, Luz Bay,
Advanced Systems in Measurement and Evaluation Fee: \$95

The purpose of this training session is for participants to learn how to perform standard setting using the Body of Work (BoW) method. Participants will take part in a compressed version of BoW standard setting, learn the various steps of the panel process, discuss issues related to certain steps, learn how to perform the required data analyses, become aware of current research findings, allowing interested parties to design and carry out additional research studies to refine the method of particular program needs. This training session will be of interest to researchers and policymakers interested in standard setting.

Monday, April 24

8:30 A.M. – 4:30 P.M.

**GG. Implementing Alternate Assessments Required by
IDEA that Promote Standards-Based Learning
for Students with Disabilities**

Organizer: Edward Roeber,
Advanced Systems in Measurement and Evaluation
Presenters: Julie Armentrout,
Advanced Systems in Measurement and Evaluation;
Pat Burgess, Sarah Kennedy, Ken Warlick,
Inclusive Large-Scale Standards and Assessment
Discussants: Ken Olsen, Mid-South Regional Resource Center;
Candy Shyer, New York State Education Department;
Dan Wiener, Massachusetts Department of Education.
Fee: \$40

The purpose of this training session is to present state and local educators with information regarding the steps they should take to develop alternate assessments for students with disabilities, unable to take part in the regular assessment programs offered to all students at the state or district levels, even with accommodations. Particular emphasis will be placed on alternate assessments that lead to improved learning of students with disabilities. The training presenters will address several steps which focus on developing and implementing a quality alternate assessment component to the overall assessment program. This training session is particularly targeted for regular educators, special educators, and school administrators.

Thursday, April 27

2:15 – 6:15 P.M.

HH. Finishing Up and Finding a Job: Practical Suggestions for Graduate Students in Measurement (co-sponsor with AERA)

Presenters: Deborah J. Harris, ACT, Inc.; Dara Martinovich-Barhite,
Wisconsin Department of Public Instruction Fee: \$15

This session addresses practical topics of concern to graduate students in measurement who have questions in such areas as: where jobs are available (e.g., school districts, state departments); what types of things employers look for in application materials; what types of questions might be asked of an interviewee; what types of questions should an interviewee ask; what are possible dissertation topics; should I finish before I leave school, etc. The format of the training session will be a combination of lecture/discussion. The goal is to discuss concerns, provide resources, guidance and reassurance for graduate students in job hunting situations. Materials will be included from a variety of resources and speakers will cover a variety of situations.

Thursday, April 27

2:15 – 6:15 P.M.

II. Reliability Generalization: A Meta-Analytic Method to Characterize Variations in the Reliability of a Measure's Scores Across Administrations (co-sponsor with AERA)

Presenters: Bruce Thompson, Texas A&M University;
Tammi Vacha-Haase, Colorado State University Fee: \$15

This training session presents a user-friendly introduction to the basic concepts of a new measurement meta-analytic method: reliability generalization. The session presumes no specialized background except basic familiarity with common analysis of variance.

AERA Division D has put together an interesting program for the Joint Meeting, and many of the sessions will interest NCME members. The following sessions may be of particular interest, but the full program includes sessions related to CAT, structural equation modeling, standard setting, TIMSS, and other measurement issues. A full listing of all Division D sessions is available in the AERA Program.

Looking at measurement from the outside: Subject area specialists talk to measurement specialists
Monday, 4:05 – 6:05 P.M., Sheraton Bayside B, 4th Floor

Beyond magical thinking: Designing ideal assessment and accountability systems
Tuesday, 10:35 A.M. – 1:35 P.M. (three hours), Sheraton Grand Ballroom A, 5th Floor

Perspectives on NAEP
Friday, 2:15 – 3:45 P.M., Sheraton Hotel, Pontchartrain F, 3rd Floor

The work of the Joint Committee for Standards on Educational Evaluation on standards for evaluation of students
Thursday, 10:35 A.M. – 12:05 P.M., Le Meridien, Ile de France II, 3rd Floor

Monday, April 24

4:00 – 7:00 P.M.

NCME Board of Directors Meeting

Members are invited to attend as observers.

Bayside A, 4th Floor
Sheraton Hotel

Major address and selected sessions of the annual meeting will be available on cassette tapes. Information on ordering tapes may be obtained in the AERA/NCME registration area.

Tuesday, April 25

8:15 – 9:45 A.M.

A1

Linking Educational Assessments — Invited Symposium

Organizer/Moderator

Bradley A. Hanson, ACT, Inc.

Presenters

Paul W. Holland, University of California at Berkeley

Linking non-parallel tests: Not just a larger error term, but bias and unfairness as well!

Eugene G. Johnson, American Institutes for Research

Issues arising in attempting to link the Voluntary National Test to NAEP

Daniel Koretz, Boston College

Embedding as a method of obtaining comparable scores across states: Findings of an NRC committee

Discussants

Robert L. Brennan, University of Iowa

Edward H. Haertel, Stanford University

Bayside C, 4th Floor
Sheraton Hotel

Tuesday, April 25

8:15 – 10:15 A.M.

A2

Exposure Rates and Calibration Issues in a CAT — Paper Session

Moderator Michael Nering, Advanced Systems, Inc.

Presenters

Hua-Hua Chang, National Board of Medical Examiners;

Wim van der Linden, University of Twente

Using 0-1 programming model in optimal a-stratified CAT designs

Cynthia G. Parshall, Jeffrey D. Kromrey, Kristine Y. Hogarty,

University of South Florida

Sufficient simplicity or comprehensive complexity? A comparison of probabilistic and stratification methods of exposure control

Chi-Keung C. K. Leung, Hong Kong Institute of Education;

Hua-Hua Chang, National Board of Medical Examiners;

Kit-Tai Hau, Chinese University of Hong Kong

Solving complex constraints in a-stratified adaptive testing design

Feng Yu, American Institutes for Research;

Ratna Nandakumar, University of Delaware

Pretest item calibration under CAT environment

Fumiko Samejima, University of Tennessee

Some considerations for improving accuracies of estimation of item characteristic curves in on-line item calibration of computerized adaptive testing

Discussants

Gage Kingsbury, North West Education Association

Bert Green, Johns Hopkins University

Pontchartrain B, 3rd Floor
Sheraton Hotel

Tuesday, April 25

8:15 – 10:15 A.M.

A3

**Making an Informed Choice among IRT Alternatives —
MCAT Graduate Student Research Program — Symposium**

Organizer/Moderator

Ellen R. Julian, Association of American Medical Colleges

Presenters

Amy Hendrickson, University of Iowa

IRT equating of the MCAT

Vinaya Kelkar, University of North Carolina at Greensboro

Evaluation of the IRT parameter invariance for the MCAT

April L. Zenisky, University of Massachusetts at Amherst

Evaluating the effects of local item dependence on MCAT scores

Discussants

Craig N. Mills, American Institute of Certified Public Accountants

Richard M. Leucht, University of North Carolina at Greensboro

Oakley, 4th Floor
Sheraton Hotel

Tuesday, April 25

10:35 A.M. – 12:05 P.M.

B1

**Applied Research in State Assessment: Practical Implications for
Large-Scale Assessment Programs — Symposium**

Organizer/Moderator

Phoebe C. Winter, Council of Chief State School Officers

Participants

M. David Miller, University of Florida

Generalizability of constructed-response assessments

Anne R. Fitzpatrick, Wendy M. Yen, CTB/McGraw-Hill

*A study of the comparability of individual student scores across non-parallel test forms
containing constructed-response items*

Ronald K. Hambleton, University of Massachusetts at Amherst

Setting standards on mixed-format assessments

David Thissen, University of North Carolina, Chapel Hill

Combining and reporting scores from mixed assessment formats

Discussants

John F. Olson, Council of Chief State School Officers

David Sweet, National Institute on Student Achievement

Ellendale, 4th Floor
Sheraton Hotel

Tuesday, April 25

10:35 A.M. — 12:05 P.M.

B2

Validity Issues — Paper Session

Moderator

Richard L. Sawyer, ACT, Inc.

Presenters

Shu Jing Yen, Nancy Bene, Maryland State Department of Education;

Huynh Huynh, University of South Carolina

The effect of content integration to the content validity of reading assessment

Catherine S. Taylor, University of Washington

A comparison of empirical methods for item classifications as evidence for the validity of objective-level scores

Ning Wang, Larry Newman, Assessment Systems, Inc.

Computer-simulated performance assessment: A validity study

Ernest N. Skakun, Thomas O. Maguire, University of Alberta

What do think-aloud protocols tell us about medical students' reasoning on multiple-choice and equivalent constructed response items?

Discussants

Ingemar Wedman, Stockholm University

Clint I. Chase, Indiana University

Tuesday, April 25

10:35 A.M. — 12:05 P.M.

B3

Rater Designs and Effects — Paper Session

Moderator

Deanna M. De'Liberto, D Squared Assessments, Inc.

Presenters

Xiaohong Gao, Lin Wang, ACT, Inc.; Robert L. Brennan, University of Iowa

Effects of changing rater facet from random to fixed on the generalizability analyses: An empirical evaluation

Husein M. Taherzadeh, Michael J. Young, University of Pittsburgh

An analysis of rater impact on composite scores using the multifaceted Rasch model

Dorothy T. Thayer, John R. Donoghue, Catherine M. Hombo,

Educational Testing Service

A simulation study of the effect of crossed and nested rater designs on ability estimation

John R. Donoghue, Catherine M. Hombo, Educational Testing Service

A comparison of different model assumptions about rater effects

Discussants

Chris Chiu, University of Pittsburgh

George Engelhard, Jr., Emory University

Tuesday, April 25

10:35 A.M. – 12:05 P.M.

B4

How Should NCME Respond to Classroom Practices That Seem to Contradict the “Code of Professional Responsibilities in Educational Measurement”? — Interactive Symposium

Organizer/Moderator

Lisa F. Smith, Kean University

Presenters

Gregory J. Cizek, University of North Carolina-Chapel Hill

Steven Friedman, University of Wisconsin at Whitewater

Susan E. Phillips, Michigan State University

Cynthia B. Schmeiser, ACT, Inc.

Jeffrey K. Smith, Rutgers University

The presenters have a range of viewpoints on the topic and will reference the *Falvo v. Owasso Public Schools* lawsuit, which was filed by parents based on negative effects on their children from the practice of students’ scoring classmates papers and announcing the scores aloud in class.

For background information on the *Falvo v. Owasso schools* decision, please look up the *Tulsa World* newspaper at www.tulsaworld.com. Once there, click on Search, then Archives. Use 4/28/99 for the date and “grading practice” for the key word. It should be noted that this case is being appealed to the Tenth Circuit Court in Denver.

Bayside C, 4th Floor
Sheraton Hotel

Tuesday, April 25

12:25 – 1:55 P.M.

C1

Graduate Student Information Session — Advice from the Professionals — Interactive Symposium

Organizer

Tracy Cerrillo, University of Pittsburgh

Presenters

Suzanne Lane, University of Pittsburgh

Insights into the job process

Carol S. Parke, West Virginia University

Insights from a new professor

Ed Slawski, Psychological Corporation

Insights into working at a large-scale testing company

Daniel R. Eignor, Educational Testing Service

Insights from a journal editor

Estherwood, 4th Floor
Sheraton Hotel

Tuesday, April 25

12:25 – 1:55 P.M.

C2

Standards – Assessments – Instructional Improvement: The Golden Triangle of American Education — National Association of Test Directors Session

Organizer

Ray Fenton, Anchorage School District

Presenters

Anne Chartrand, National Computer Systems

Whose standard are they anyway?

Fredrick Stofflet, Anchorage Public Schools

Alignment of curriculum and instruction to state standards and assessments:

A visit to the real world

Mike Strozkeski, Garland Independent School District, Garland, Texas

High stakes, high standards, massive testing, & improved student success

Bob Tobias, New York City Public Schools

The systematic impact of standards and assessments on instruction and school management

Discussant

Joe Hansen, Consultant

Tuesday, April 25

12:25 – 1:55 P.M.

C3

Solving Problems in International and Cross-Lingual Assessment — Symposium

Organizers

Hariharan Swaminathan, Stephen G. Sireci

University of Massachusetts at Amherst

Moderator

Linda Cook, Educational Testing Service

Presenters

Hariharan Swaminathan, University of Massachusetts at Amherst

Methodological issue in cross-linguistic comparisons

Stephen G. Sireci, University of Massachusetts at Amherst;

James Harter, Yongwei Yang, Dennison Bhola, The Gallup Organization

Evaluating the construct evidence of an international employee opinion survey

Ronald K. Hambleton, University of Massachusetts at Amherst;

Enhancing the validity of the test adaptation process: Improving the review process

Discussants

Michal Beller, The Open University, Israel

Kurt F. Geisinger, Le Moyne College

Tuesday, April 25

12:25 – 1:55 P.M.

Oakley, 4th Floor
Sheraton Hotel

C4

Accuracy Issues with Norms, Achievement Levels, and Classifications — Paper Session

Moderator

Valerie S. L. Williams, North Carolina Central University

Presenters

R. Gene Hoffman, Laress L. Wise, HumRRO

Establishing the reliability of student proficiency classifications

Dean A. Colton, ACT, Inc.

The accuracy of interpolated norms

Alvaro Arce-Ferrer, Autonomous University of Yucatan, Mexico;

David A. Frisbie, Michael J. Kolen, University of Iowa

Standard errors of proportions used in reporting changes in group performance with achievement levels

Won-Chan Lee, ACT, Inc.; Robert L. Brennan, University of Iowa;

Bradley A. Hanson, ACT, Inc.

Procedures for computing classification consistency indices with multiple categories

Discussants

Anne R. Fitzpatrick, CTB/McGraw-Hill

Andre F. De Champlain, National Board of Medical Examiners

Tuesday, April 25

2:15 – 3:45 P.M.

Tables 17 – 32, Ponchartrain C,
3rd Floor, Sheraton Hotel

D1

Graduate Student Poster Session

Organizers

Bonita Steele, University of British Columbia;

Deanna L. Morgan, University of Georgia

Posters

17. Jason E. King, Texas A&M University
Bootstrapping robust measures of correlation
18. K. A. Boughton, D. A. Klinger, University of Alberta
Parameter recovery in the generalized partial credit model versus the graded response model
19. Yuming Liu, University of Iowa
Standard error estimation of IRT model parameters as functions of sample size and distribution of ability with Markov Chain Monte Carlo method
20. L. M. Hellsten, D. L. Henderson, D. A. Klinger, University of Alberta
Using generalizability theory to identify problems in performance assessments

21. Charles Ochieng, University of British Columbia
Effects of item order on consistency and precision of attitudinal scales under different ordering schemes: The case of a physical self-concept scale
22. Shola Akindele, University of British Columbia
The development of a prototype item bank: A case-study of Nigeria in West Africa
23. Thomas K. Burdenski, Texas A&M University;
Kevin M. Kieffer, James A. Haley, VA Medical Center, Tampa
A brief review of the influences on SEM fit indices in covariance structure analysis: The effects of sample size, type of index, model specification, and estimation method
24. Saba Rizavi, Hariharan Swaminathan,
University of Massachusetts at Amherst
The effect of violation of the linear model assumption on the variance component estimates and the generalizability coefficient
25. Tess Dawber, Joanna Tomkowicz, University of Alberta
Comparison of testwise susceptible and non-susceptible to testwiseness items using classical item analysis and nominal model of item response theory
26. Sooyeon Kim, University of Georgia
Applications of confirmatory factor analysis to the study of adolescent temperament: First- and second-order factor models and factor invariance
27. Kevin M. Kieffer, James A. Haley, VA Medical Center, Tampa;
Robin K. Henson, University of Southern Mississippi
Development and validation of the Sources of Self-Efficacy Inventory (SOSI): Exploring a new measure of teacher efficacy
28. Marjorie R. Wallace, Michigan State University
Change and innovation: A review of standard setting procedures for large-scale assessments
29. Shameen Nyla Khaliq, University of Alberta
A complete test of Hulin's Hypothesis
30. Stephanie Barclay McKeown, Bonita Steele, University of British Columbia
A meta analytic reliability generalization of the Beck Depression Inventory
31. M. A. Simpson, Sandra B. Neustel, Grace Kissling,
University of North Carolina at Greensboro
Predicting change in mathematics achievement from 8th to 12th grades: A hierarchical linear modeling approach
32. N. Scott Bishop, University of Iowa
The validity of Reading Comprehension Test scores: Evidence of generalizability across different test administration conditions

Tuesday, April 25

2:15 – 3:45 P.M.

D2 1998 Career Award Winner Address
Conceptual Compatibility between Large-Scale and Classroom Assessments — Invited Address

Moderator

Robert L. Linn, University of Colorado

Presenter

Lorrie A. Shepard, University of Colorado at Boulder

Discussants

Caroline Gipps, Kingston University, Surrey

Robert J. Mislevy, Educational Testing Service

Cassettes of this session will be available for purchase in the registration area.

Pontchartrain B, 3rd Floor
Sheraton Hotel

Tuesday, April 25

2:15 – 3:45 P.M.

D3
Maintaining Test Security in Computerized Testing Programs – Implications for Practice — Invited Symposium

Organizer

Cynthia G. Parshall, University of South Florida

Moderator

Lynda M. Reese, Law School Admission Council

Presenters

Fanmin Guo, Walter D. Way, Rosemary Reshetar
Educational Testing Service

Test security and the development of computerized tests

John Kalohn, Judy Spray, ACT, Inc.

Test security and item exposure control for computer-based examinations

Gerald Rosen, Sylvan Prometric

Computer-based testing — Test site security

Mark D. Shermis, IUPUI

Where did all the data go? Internet security for Web-based assessments

Discussants

Tim Davey, ACT, Inc.

Cynthia G. Parshall, University of South Florida

Cassettes of this session will be available for purchase in the registration area.

Bayside C, 4th Floor
Sheraton Hotel

Tuesday, April 25

2:15 – 3:45 P.M.

D4

Linking Issues with Performance Assessments — Paper Session

Moderator

Mary Schratz, Performance Solutions, Inc.

Presenters

Nancy L. Allen, Dorothy T. Thayer, Educational Testing Service;

Paul W. Holland, University of California-Berkeley

Equating free-response questions selected by examinees

Andre F. De Champlain, Marc E. Gessaroli,

National Board of Medical Examiners

Equating performance-based tests using structural equation modeling: Assessing the impact of anchor length and sample on mastery-level decision consistency rates

Hunter M. Breland, Eiji Muraki, Yong-Won Lee, Michelle Najarian, Julia Beyer,

Educational Testing Service

Comparability in TOEFL CBT essay prompts using logistic regression method

Anne R. Fitzpatrick, Guemin Lee, Furong Gao, CTB/McGraw-Hill

Assessing the comparability of school scores across test forms that are not parallel

Discussants

Mark L. Davison, University of Minnesota

Richard Hill, Center for Assessment

Tuesday, April 25

4:05 – 6:05 P.M.

E1

Setting Standards and Passing Scores — Paper Session

Moderator

Linda Althouse, SAS Institute

Presenters

Stephen G. Sireci, Saba Rizavi, Alan Dillingham, Georgette Rodriquez,

University of Massachusetts at Amherst; Thanos Patelis, The College Board

Setting standards on a computerized adaptive placement examination

Susan J. Thomas, IBM Corporation

Determining the passing score for translated tests: implications for practice

Huynh Huynh, University of South Carolina

On item mapping and statistical rules for selecting binary items for criterion-referenced interpretation and bookmark standard setting

Barbara Donahue, Jeri Benson, Steve Cramer, University of Georgia

Setting standards on a kindergarten performance assessment: A joint application of two recent methods

Luz G. Bay, Advanced Systems

1998 NAEP writing achievement levels-setting process performance profiles study

Discussants

Patricia B. Elmore, Southern Illinois University

Mark Albanese, University of Wisconsin Medical School

Tuesday, April 25

4:05 – 6:05 P.M.

E2

The Feasibility of Linking Scores on the Voluntary National Test (VNT) and the National Assessment of Educational Progress (NAEP) — Invited Symposium

Organizer

Patricia Ann Kenney, University of Pittsburgh

Moderator

Valerie S. L. Williams, North Carolina Central University

Presenters

Gregory J. Cizek, University of North Carolina-Chapel Hill

Factors affecting the NAEP and VNT scales

Charles W. Peters, Oakland Schools, Waterford, Michigan;

Patricia Ann Kenney, University of Pittsburgh (both presenting)

Content and process considerations in linking the NAEP and VNT scales

Michael J. Kolen, University of Iowa;

Wim van der Linden, University of Twente (both presenting)

Psychometric considerations in linking the NAEP and VNT scales

Discussants

Edward H. Haertel, Stanford University

Eugene G. Johnson, American Institutes for Research

Bayside C, 4th Floor
Sheraton Hotel

Tuesday, April 25

4:05 – 6:05 P.M.

E3

Measurement Wit and Wisdom for the 21st Century: Sharing Research Experiences — Graduate Student Issues Session

Organizer:

Michelle A. Mingeling, University of Iowa

Moderator

H. D. Hoover, University of Iowa

Presenters

Sylvia T. Johnson, Howard University/CRESPAR

Working with teachers to improve assessment — both “theirs” and “ours”

Lloyd Bond, University of North Carolina

A retrospective and prospective look at research on test bias

Hariharan Swaminathan, University of Massachusetts at Amherst

Research areas and training of researchers in measurement

Fumiko Samejima, University of Tennessee

Software, user friendly or user unfriendly?

Ronald A. Berk, Johns Hopkins University

The 7 career habits of highly effective psychometricians

Ponchartraine B, 3rd Floor
Sheraton Hotel

Cassettes of this session will be available for purchase in the registration area.

Tuesday, April 25

6:15 – 7:30 P.M.

No-Host Cocktail Party and Reception

Members of NCME are invited to attend the No-Host Cocktail Party and Reception, which will be held in conjunction with the NCME Graduate Student Issues Committee reception.

The reception is sponsored by ACT, Inc., CTB/McGraw-Hill, Educational Testing Service, GED Testing Service, Harcourt Educational Measurement, Measured Progress, National Board of Medical Examiners.

Wednesday, April 26

5:30 – 7:30 A.M.

NCME Fitness Run/Walk Marriott Hotel: Inside Lobby

Co-Directors:

Ronald A. Berk, Johns Hopkins University
Valerie Andrews, Southern Runner Production

Run or walk 5K/2.5K course in Audubon Park. Meet in the lobby of the Marriott Hotel at 5:30 A.M. Buses will leave promptly at 6:00 A.M. for the Park. The last bus will return to the Marriott by 7:30 A.M. Advanced registration is required.

This event is made possible through the sponsorship of: Harcourt Brace Educational Measurement, CTB/McGraw-Hill, Riverside Publishing Company, National Evaluation Systems, and *Runner's World*.

Wednesday, April 26

8:00 – 10:15 A.M.

F1

NCME Breakfast and Presidential Address

Linking Assessments Effectively: Purpose and Design

Presenter

Michael J. Kolen, University of Iowa

NCME members who would like to attend only the presidential address are welcome at 9:00 A.M.

Cassettes of this session will be available for purchase in the registration area.

Bissonet, 3rd Floor
Marrion

Wednesday, April 26

10:35 A.M. – 12:05 P.M.

G1

**Annual Teachers' Classroom Assessment Recognition Program —
Poster Session**

Organizers

Rick Stiggins, Assessment Training Institute

Jeff Oescher, University of New Orleans

Presenters

Teachers from the New Orleans area will be recognized for their outstanding achievements in classroom assessment.

Pontchartrain C, 3rd Floor
Sheraton Hotel

Wednesday, April 26

10:35 A.M. – 12:05 P.M.

G2

A Judgment and Decision-Making Perspective on Performance on Multiple-Choice Tests — Related Papers

Organizer/Moderator

David V. Budescu, University of Illinois

Presenters

Anat Ben-Simon, National Institute for Testing and Evaluation;

Gershon Ben-Shakhar, The Hebrew University of Jerusalem

Cognitive aspects of partial knowledge as expressed in multiple-choice tests

Yigal Attali, National Institute for Testing and Evaluation;

Maya Bar-Hillel, The Hebrew University of Jerusalem

Guessing in multiple-choice tests as a judgement and choice problem

Yoella Bereby-Meyer, Joachim Meyer, Ben-Gurion University of the Negev;

David V. Budescu, University of Illinois

A decision analysis of the effects of scoring rules on MC tests

Discussants

Linda L. Cook, Educational Testing Service

Tim Davey, ACT, Inc.

Wednesday, April 26

10:35 A.M. – 12:05 P.M.

G3

Issues in Testing Accommodations — Paper Session

Moderator

Herbert W. Ware, George Mason University

Presenters

Karen Barton, Huynh Huynh, University of South Carolina

Type of errors made by accommodated students on a high-stakes reading examination comprising multiple-choice items

Linda Meloy, Western Illinois University;

David A. Frisbie, Craig Deville, University of Iowa

The effect of a reading accommodation on standardized test scores of learning disabled and non-learning disabled students

Ronald L. Huesman, David A. Frisbie, University of Iowa

The validity of ITBS Reading Comprehension test scores for learning disabled and non-learning disabled students under extended-time conditions

Pamela M. Jakwerth, American Institutes for Research

Developing a national alternative assessment for students with disabilities:

A feasibility study

Discussants

David Mittelholtz, ACT, Inc.

Stephen N. Elliott, University of Wisconsin, Madison

Program Summary

<i>Session Time</i>	<i>Number</i>	<i>Location</i>	<i>Session Title</i>
Monday, April 24th Afternoon Session			
• 4:00		Sheraton, Bayside A	NCME Board of Directors Meeting
Tuesday, April 25th Morning Sessions			
• 8:15	A1	Sheraton, Bayside C	Linking educational assessments
	A2	Sheraton, Ponchartrain B	Exposure rates and calibration issues in a CAT
	A3	Sheraton, Oakley	Making an informed choice among IRT alternatives—MCAT Graduate Student Research Program
• 10:35	B1	Sheraton, Ellendale	Applied research in state assessment: Practical implications for large-scale assessment programs
	B2	Sheraton, Ponchartrain B	Validity issues
	B3	Sheraton, Oakley	Rater designs and effects
	B4	Sheraton, Bayside C	How should NCME respond to classroom practices that seem to contradict the “Code of Professional Responsibilities in Educational Measurement”?
Tuesday, April 25th Afternoon Sessions			
• 12:25	C1	Sheraton, Estherwood	Graduate Student Information Session
	C2	Sheraton, Ponchartrain B	Standards–assessments–instructional improvement: The golden triangle of American education
	C3	Sheraton, Bayside C	Solving problems in international and cross-lingual assessment
	C4	Sheraton, Oakley	Accuracy issues with norms, achievement levels, and classifications
• 2:15	D1	Sheraton, Ponchartrain C	Graduate Student poster session
	D2	Sheraton, Ponchartrain B	Conceptual compatibility between large-scale and classroom assessments
	D3	Sheraton, Bayside C	Maintaining test security in computerized testing programs—Implications for practice
	D4	Sheraton, Oakley	Linking issues with performance assessments

<i>Session Time</i>	<i>Number</i>	<i>Location</i>	<i>Session Title</i>
Tuesday, April 25th Afternoon Sessions (cont'd)			
• 4:05	E1	Sheraton, Oakley	Setting standards and passing scores
	E2	Sheraton, Bayside C	The feasibility of linking scores on the Voluntary National Test (VNT) and the National Assessment of Educational Progress (NAEP)
	E3	Sheraton, Ponchartrain B	Measurement wit and wisdom for the 21st century: Sharing research experiences
• 6:15		Sheraton, Ponchartrain B	No-Host Cocktail Party and Reception
Wednesday, April 26th Morning Sessions			
• 5:30		Marriott, Inside Lobby	NCME Fitness Run/Walk
• 8:00	F1	Marriott, Bissonet	NCME Breakfast/Presidential Address
• 10:35	G1	Sheraton, Ponchartrain C	Annual teachers' classroom assessment recognition program
	G2	Marriott, Bonaparte	A judgment and decision-making perspective on performance on multiple-choice tests
	G3	Marriott, Mardi Gras C	Issues in testing accommodations
	G4	Marriott, Mardi Gras D	Looking forward and back: Measurement issues for the 21st century
Wednesday, April 26th Afternoon Sessions			
• 12:25	H1	Marriott, Mardi Gras D	Looking forward and back: Measurement issues for the 21st century (cont'd)
	H2	Marriott, Bonaparte	Test score accuracy
	H3	Marriott, Mardi Gras C	New considerations of validity with second language tests
• 2:15	I1	Marriott, Bonaparte	Determining the appropriateness of assessments with nontraditional test takers: The effect of changing demographics
	I2	Marriott, Mardi Gras C	A synthesis of the consequential evidence for MSPAP: How has a state performance-based assessment program affected instruction and student learning?
	I3	Marriott, Mardi Gras D	Software Ad Hoc Committee Report

<i>Session Time</i>	<i>Session Number</i>	<i>Location</i>	<i>Session Title</i>
Wednesday, April 26th Afternoon Sessions (cont'd)			
• 4:05	J1	Marriott, Bonaparte	Test use in admissions, placement, and decision-making
	J2	Marriott, Mardi Gras C	Dimensionality and Fit
	J3	Marriott, Mardi Gras D	Computerized adaptive testing: New developments and applications
	J4	Marriott, Balcony I	Issues with IRT and classical item statistics
	J5	Marriott, Mardi Gras F	Equating issues
Thursday, April 27th Morning Sessions			
• 8:15	K1	Le Meridien Hotel, Suite 801	Comparing student, district, and state achievement to national standards
	K2	Le Meridien Hotel, St. Claude	Standards and standard setting methods used in different states
	K3	Le Meridien Hotel, Ile de France III	Adaptive testing research at ACT
• 10:35	L1	Le Meridien Hotel, St. Claude	Scores, grades, and standards
	L2	Le Meridien Hotel, Suite 801	Reliability and generalizability issues
	L3	Le Meridien Hotel, Ile de France III	Item Response Models
	L4	Le Meridien Hotel, Ile de France I	Graduate Student Paper Session
Thursday, April 27th Afternoon Sessions			
• 12:25	M1	Le Meridien Hotel, Suite 801	Minority Issues and Testing
	M2	Le Meridien Hotel, St. Claude	The ACT/NAGB standard setting method: The results of eight years of development
	M3	Le Meridien Hotel, Ile de France I	The state-of-the-art in computer-automated scoring for performance assessments
	M4	Le Meridien Hotel, Ile de France III	Applying the New Standards with operational testing programs

<i>Time</i>	<i>Session Number</i>	<i>Location</i>	<i>Session Title</i>
Thursday, April 27th Afternoon Sessions (cont'd)			
• 2:15	N1	Le Meridien Hotel, St. Claude	Response time and DIF in CAT
	N2	Le Meridien Hotel, Suite 801	Testing over the Internet: Examples of types of uses
	N3	Le Meridien Hotel, Ile de France III	The development and application of multi-stage testlet-based designs for computerized adaptive testing
• 4:05	O1	Le Meridien Hotel, Suite 801	Educating assessment professionals for applied settings
	O2	Le Meridien Hotel, St. Claude	DIF Issues
	O3	Le Meridien Hotel, Ile de France III	Comparability issues in test assembly, test translation, and item context
• 4:00		Marriott, St. Charles	NCME Board of Directors Meeting

Of special interest to graduate students:

A3 Making an informed choice among IRT alternatives — MCAT Graduate Student Research Program (Tuesday, 8:15)

The three graduate students who participated in the MCAT's 1999 summer externship program will present their research, followed by two discussants providing comments.

C1 Graduate Student Issues Information Session: Advice from the professionals (Tuesday, 12:25)

D1 Graduate Student Poster Session (Tuesday, 2:15)

Sixteen selected graduate students will present their research in a poster format.

E3 Measurement wit and wisdom for the 21st century: Sharing research experiences — Graduate Student Issues Committee Session (Tuesday, 4:05)

No-Host Cocktail Party

A reception will be held immediately following the above presentations. Graduate students should locate a member of the Graduate Student Issues Committee there to get two free beverage tickets.

L4 Graduate Student Paper Session (Thursday, 10:35)

Four selected graduate students will present their research, followed by two discussants providing comments.

HH. Finishing Up and Finding a Job: Practical Suggestions for Graduate Students in Measurement (co-sponsor with AERA)

Presenters: Deborah J. Harris, ACT, Inc.;

Dara Martinovich-Barhite, Wisconsin Department of Public Instruction

Date: Thursday, April 27, 2:15-6:15

Fee: \$15

Wednesday, April 26

10:35 A.M. – 12:05 P.M.

G4

Looking Forward and Back: Measurement Issues for the 21st Century — Invited Symposium

Organizer

Catherine J. Welch, ACT, Inc.

Moderator

Cynthia B. Schmeiser, ACT, Inc.

Presenters

Michael T. Kane, University of Wisconsin

Current concerns in validity theory

Robert L. Brennan, University of Iowa

Reliability: Historical practice, current problems, and future prospects

Nancy Cole, Educational Testing Service

The new faces of fairness

Mark D. Reckase, Michigan State University

Computerized testing – The adolescent years: Juvenile delinquent or positive role model?

Eva Baker, UCLA/CRESST

Roles of performance assessment in practice and policy

Cassettes of this session will be available for purchase in the registration area.

Mardi Gras D, 3rd Floor
Marriott Hotel

Wednesday, April 26

12:25 – 1:55 P.M.

H1

Looking Forward and Back: Measurement Issues for the 21st Century — Invited Symposium (cont.)

Organizer

Catherine J. Welch, ACT, Inc.

Moderator

Cynthia B. Schmeiser, ACT, Inc.

Presenters

Rick Stiggins, Assessment Training Institute

Classroom assessment: A history of neglect, a future of immense potential

Susan Embretson, University of Kansas

Improving construct validity with cognitive psychology principles

Ronald K. Hambleton, University of Massachusetts at Amherst

Measurement, test design, and scoring models

Discussants

Linda Crocker, University of Florida

H.D. Hoover, University of Iowa

Cassettes of this session will be available for purchase in the registration area.

Mardi Gras D, 3rd Floor
Marriott Hotel

Wednesday, April 26

12:25 – 1:55 P.M.

Bonaparte, 4th Floor
Marriott Hotel

H2

Test Score Accuracy — Paper Session

Moderator

Carol Morrison Featherman, National Board of Medical Examiners

Presenters

Nilufer Caper, Florida State University;

Tony D. Thompson, Tim Davey, ACT, Inc.

Using out-of-scale information to increase the precision of test scores

Carrolyn K. Iwamoto, Ronald J. Nungester,

National Board of Medical Examiners

Detection of person misfit due to item exposure in computer-based testing

Liane N. Patsula, Educational Testing Service;

Lori D. McLeod, Law School Admission Council

Detecting items that have been memorized in computerized-adaptive testing and multi-stage testing: A comparison

Daniel O. Segall, Defense Manpower Data Center

An item response model for characterizing test compromise

Discussants

Janice Scheuneman, Quality Assessment Services

James Wollack, University of Wisconsin

Wednesday, April 26

12:25 – 1:55 P.M.

Mardi Gras C, 3rd Floor
Marriott Hotel

H3

New Considerations of Validity with Second Language Tests — Invited Symposium

Organizers

Craig Deville, Micheline Chalhoub-Deville, University of Iowa

Moderator

Micheline Chalhoub-Deville, University of Iowa

Presenters

Terry Ackerman, University of North Carolina at Greensboro

A comparison of the dimensionality of TOEFL response data from different first language groups

Lyle F. Bachman, University of California at Los Angeles

Alternative interpretations to alternative assessments: Some validity issues in educational performance assessments

Charles Stansfield, Charlene Rivera, Second Language Testing, Inc.

A national survey of LEP accommodation policies and their implications

Bruno D. Zumbo, University of Northern British Columbia

The effect of DIF on classical test statistics: Undetected DIF and the reliability and interpretability of scores from a language proficiency test

Discussants

Craig Deville, University of Iowa

Daniel R. Eignor, Educational Testing Service

Wednesday, April 26

2:15 – 3:45 P.M.

Bonaparte, 4th Floor
Marriott Hotel

I1

Determining the Appropriateness of Assessments with Nontraditional Test Takers: The Effect of Changing Demographics — Symposium

Organizer

Cathy LW Wendler, Educational Testing Service

Moderator

Amy Elizabeth Schmitt, The College Board

Presenters

Patricia Baron, W. Edward Curley, Educational Testing Service

The effects of different language background indicators

Cathy LW Wendler, Miriam Feigenbaum, Alicia Schmitt,

Educational Testing Service

Defining group membership: The impact of multiple versus single ethnic/racial categories on testing practices

Carolyn Crone, Educational Testing Service

Scaling and equating language tests with native language speakers

Brent Bridgeman, Educational Testing Service

Selecting students with a general reasoning test (SAT I) or tests in academic subjects (SAT II): Does it matter for non-native speakers of English?

Cathy LW Wendler, Anne Ninneman, Miriam Feigenbaum,

Educational Testing Service

Evaluating the appropriateness of the SAT I for 7th and 8th graders

Discussants

Lloyd Bond, University of North Carolina

Rebecca Zwick, University of California, Santa Barbara

Wednesday, April 26

2:15 – 3:45 P.M.

Mardi Gras C, 3rd Floor
Marriott Hotel

I2

A Synthesis of the Consequential Evidence for MSPAP: How has a State Performance-Based Assessment Program Affected Instruction and Student Learning? — Symposium

Organizer/Moderator

Suzanne Lane, University of Pittsburgh

Presenters

Suzanne Lane, Clement A. Stone, Carol S. Parke, University of Pittsburgh

Consequential evidence for MSPAP from the teacher, principal, and student perspective

Tracy L. Cerrillo, Mary A. Hansen, Carol S. Parke, Suzanne Lane,

Kathryn Scott, University of Pittsburgh

The relationship between MSPAP and science classroom instruction and assessment materials

Mary A. Hansen, Tracy L. Cerrillo, Suzanne Lane, Jennifer Padula,

Carol S. Parke, Jill R. Van den Heuvel, University of Pittsburgh

The relationship between MSPAP and social studies classroom instruction and assessment materials

Clement A. Stone, Suzanne Lane, University of Pittsburgh

MSPAP performance gains from 1993–1998 and their relationship to “MAPAP’S impact” and school characteristic variables

Discussants

Wendy M. Yen, CTB/McGraw-Hill

Stephen Ferrara, American Institutes for Research

Wednesday, April 26

2:15 – 3:45 P.M.

I3

Software Ad Hoc Committee Report — Invited Interactive Symposium

Organizer

Bradley A. Hanson, ACT, Inc.

Moderator

Jim Carlson, CTB/McGraw-Hill

Presenters

Bradley Hanson, ACT, Inc.; Cynthia Parshall, University of South Florida

Discussants

Gary Skaggs, West Mesa Associates, Inc.

Anne R. Fitzpatrick, CTB/McGraw-Hill

Committee Members

Robert Brennan, Jim Carlson, Joe Crick, Bradley Hanson (Chair),

Eiji Muraki, Cynthia Parshall

A copy of the committee report will be available before the annual meeting on the committee web page at www.b-a-h.com/ncmesoft. A portion of this session will be set aside to allow for prepared comments on the committee report by NCME members. Contact Bradley Hanson (bradh@pobox.com) if you would like to reserve some time during the session to present prepared comments.

Wednesday, April 26

4:05 – 6:05 P.M.

J1

Test Use in Admissions, Placement, and Decision-Making — Paper Session

Moderator

E. James Maxey, ACT, Inc.

Presenters

Richard L. Sawyer, Jeff L. Schiel, ACT, Inc.

Posttesting students to assess the effectiveness of remedial instruction in college

Andrea E. Thornton, Peter J. Pashley, Law School Admission Council

Optimizing admission decisions

Samuel A. Livingston, Educational Testing Service

How well do SAT scores predict pass/fail status on a college-level basic skills test?

Damian W. Betebenner, University of Colorado Boulder;

E. Matthew Schulz, ACT, Inc.

A comparison of Bayesian and maximum likelihood estimation procedures in

ACT Course Placement analyses

Thomas S. Paskus, University of Denver, John J. McArdle, University of Virginia

A decision theoretic methodology for making high-stakes psychometric decisions

Discussants

Thomas Haladyna, Arizona State University

Ellen R. Julian, Association of American Medical Colleges

Wednesday, April 26

4:05 – 6:05 P.M.

J2

Dimensionality and Fit — Paper Session

Moderator

Sandra M. Harris, Auburn University

Presenters

Carol S. Parke, West Virginia University

An examination of factors influencing the fit of mathematics performance items to the graded response model

Jinming Zhang, Educational Testing Service

Estimating multidimensional item response models with approximate simple structure

Hui Deng, Timothy N. Ansley, University of Iowa

Detecting compensatory and noncompensatory multidimensionality using DIMTEST

Richard B. Sullivan, Timothy N. Ansley, Stephen B. Dunbar, University of Iowa

Dimensionality of complex achievement domains in mathematics as a function of developmental level

Brain T. Habing, R. Webster West, University of South Carolina

Applications of data image to testing data

Discussants

E. Matthew Schulz, ACT, Inc.

Lila J. Quero-Munoz, State Examining Boards

Mardi Gras C, 3rd Floor
Marriott Hotel

Wednesday, April 26

4:05 – 6:05 P.M.

J3

Computerized Adaptive Testing: New Developments and Applications — Symposium

Organizer Wim J. van der Linden, University of Twente

Moderator Rob R. Meijer, University of Twente

Presenters

Wim J. van der Linden, University of Twente

Constrained adaptive testing with shadow tests

Cees A. W. Glas, University of Twente

A Bayesian approach to evaluation of model fit in on-line calibration in computer adaptive testing

Rob R. Meijer, University of Twente

Testing invariant ability in computerized adaptive testing

Edith M. L. A. van Krimpen-Stoop, University of Twente

Detection of person misfit in computerized adaptive testing with polytomous items

Hans J. Vos, University of Twente

Adaptive mastery testing using a multidimensional IRT model and Bayesian sequential decision theory

Discussants

Hua-Hua Chang, National Board of Medical Examiners

Craig N. Mills, American Institute of Certified Public Accountants

Mardi Gras D, 3rd Floor
Marriott Hotel

Wednesday, April 26

4:05 – 5:35 P.M.

J4

Issues with IRT and Classical Item Statistics — Paper Session

Moderator

Rebecca S. Lipner, American Board of Internal Medicine

Presenters

Stephen E. Stark, Fritz Drasgow, University of Illinois

Development of parameter estimation procedures for the Zinnes and Griggs paired comparison ideal point IRT model

Gray S. Kaskowitz, University of Maryland;

R. J. De Ayala, University of Nebraska

An examination of error in IRT item parameter estimates on linking and equating using the test characteristic curve method

Gary A. Schaeffer, Marc W. Julian, Tsung-Hsun Tsai, CTB/McGraw-Hill

The impact of ceiling effects on IRT parameter estimates

Shun-wen Chang, National Taiwan Normal University;

Bradley A. Hanson, Deborah J. Harris, ACT, Inc.

A standardization approach to adjusting pretest item statistics

Discussants

Eiji Muraki, Educational Testing Service

Michael R. Harwell, University of Pittsburgh

Wednesday, April 26

4:05 – 5:35 P.M.

J5

Equating Issues — Paper Session

Moderator

Catherine S. Taylor, University of Washington

Presenters

William F. Lohss, Thomas E. Langenfeld, ACT, Inc.

An investigation of the adequacy of IRT pre-equating of certification tests

Heru Widiatmo, Bradley A. Hanson, ACT, Inc.

Describing a procedure for computing the standard error of equating of a composite score using the bootstrap

Qing Yi, Bradley A. Hanson, Deborah J. Harris, ACT, Inc.

Procedures of screening for “affected” common items in common-item nonequivalent groups design

Anton A. Beguin, Cees A. W. Glas, University of Twente;

Bradley A. Hanson, ACT, Inc.

MCMC multidimensional IRT observed score equating: Robustness to multidimensionality of unidimensional equating

Discussants

Ida M. Lawrence, Educational Testing Service

Gary Skaggs, West Mesa Associates, Inc.

Thursday, April 27

8:15 – 9:45 A.M.

K1

Comparing Student, District, and State Achievement to National Standards — Symposium

Organizer/Moderator

Judy Koenig, National Academy of Sciences

Presenters

Michael Feuer, National Academy of Sciences

Background and context for studies

Lauress Wise, Human Resources Research Organization;

Richard Noeth, National Academy of Sciences

Evaluation of the development of voluntary national tests, Year 2

Pasquale DeVito, Rhode Island Department of Education;

Kaeli Knowles, National Academy of Sciences

Investigating the feasibility of district-level NAEP

Daniel Koretz, The Center for the Study of Testing, Evaluation,
and Educational Policy

Embedding items in state and district tests

Discussants

Michael J. Kolen, University of Iowa

John Tanner, Delaware Department of Education

Suite 801, 8th Floor
Le Meridien Hotel

Thursday, April 27

8:15 – 10:15 A.M.

K2

Standards and Standard-Setting Methods Used in Different States — Symposium

Organizer/Moderator

Luz G. Bay, Advanced Systems

Presenters

Steve Rattenborg, Minnesota Department of Children, Families and Learning

Modified-Angoff method: Minnesota Comprehensive Assessment

Daniel M. Lewis, CTB/McGraw-Hill

Bookmark procedure: Colorado Student Assessment Program (CSAP)

Neal M. Kingston, Advanced Systems

Body of Work (BOW) method: Massachusetts Comprehensive Assessment System (MCAS)

Kevin P. Sweeney, Advanced Systems

Contrasting groups and Body of Work (BOW) method: Wyoming Comprehensive Assessment System (WYCAS)

Discussants

Robert A. Forsyth, University of Iowa

Douglas Rindone, Connecticut Department of Education

St. Claude, 3rd Floor
Le Meridien Hotel

Thursday, April 27

8:15 – 10:15 A.M.

K3

Adaptive Testing Research at ACT — Symposium

Organizer

Timothy R. Miller, ACT, Inc.

Moderator

Maria Potenza, Microsoft Corporation

Presenters

Timothy R. Miller, ACT, Inc.

Some principals and methods for adaptive testing

Tim Davey, ACT, Inc.

Specific information item selection in adaptive testing

Meichu Fan, Tim Davey, ACT, Inc.

Specific information item selection applied to discrete-item tests

Tony D. Thompson, Tim Davey, ACT, Inc.

Specific information item selection applied to passage-based tests

Mary Pommerich, Timothy Burden, ACT, Inc.

From simulation to application: Examinees react to computerized testing

Discussants

David Thissen, University of North Carolina at Chapel Hill

Walter D. Way, Educational Testing Service

Thursday, April 27

10:35 A.M. – 12:05 P.M.

L1

Scores, Grades, and Standards — Paper Session

Moderator

Kristie K. Waltman, ACT, Inc.

Presenters

Hazen Ham, American Board of Emergency Medicine;

Richard Shavelson, Stanford University;

Mary Ann Reinhart, Leonard Bianchi, American Board of Emergency Medicine

Using compensatory and conjunctive scoring approaches with a medical certificate oral examination

Melissa J. Margolis, Andre F. De Champlain, Daniel J. Klass,

National Board of Medical Examiners

Scoring a large-scale performance assessment: A comparison of two approaches

James H. McMillan, Virginia Commonwealth University

Teacher classroom assessment and grading practices decision-making

Chad W. Buckendahl, Barbara S. Plake, James C. Impara, Patrick M. Irwin,

University of Nebraska-Lincoln

Alignment of standardized achievement tests to state content standards: A comparison of publishers' and teachers' perspectives

Discussants

Paul Nichols, ACT, Inc.

Amy E. Schmidt, The College Board

Thursday, April 27

10:35 A.M. – 12:05 P.M.

Suite 801, 8th Floor
Le Meridien Hotel

L2

Reliability and Generalizability Issues — Paper Session

Moderator

Jay T. Parkes, University of New Mexico

Presenters

Bokhee Yoon, University of California;

Michael Young, University of Pittsburgh

Estimating the reliability for test scores with mixed item formats: Internal consistency and generalizability

Elizabeth Burton, Aurora Public Schools, Aurora, Colorado

A comparison of the generalizability of large-scale performance assessment results for pupil-level vs. school-level decisions

Chris W. Chiu, University of Pittsburgh

A subdividing method for generalizability theory: Precision of measurement errors and the amounts and pattern of missing data

Lisa A. Keller, University of Massachusetts at Amherst;

Brian Clauser, David Swanson, Polina Harik, Stephen Clyman,

National Board of Medical Examiners

A multivariate generalizability analysis to examine the effect of content stratification on the reliability of a performance assessment

Discussants

Joy A. Frechtling, WESTAT

Brian Clauser, National Board of Medical Examiners

Thursday, April 27

10:35 A.M. – 12:05 P.M.

Ile de France III, 3rd Floor
Le Meridien Hotel

L3

Item Response Models — Paper Session

Moderator

Sara S. Hennings, Riverside Publishing

Presenters

Richard J. Patz, CTB/McGraw-Hill; Brian W. Junker, Carnegie Mellon University; Machteld Hoskens, Mark R. Wilson, University of California-Berkeley

Advances in item response models for multiple ratings of student work

Sarah M. Hartz, University of Illinois at Urbana-Champaign;

Louis V. DiBello, Educational Testing Service;

William F. Stout, University of Illinois at Urbana-Champaign

A Bayesian framework for the unified model for cognitive abilities: Added flexibility and improved parameter estimation

Jon Cohen, American Institutes for Research;

Andrew Kolstad, National Center for Education Statistics

Theory-consistent item response models

Young-Sun Lee, Jeffrey Douglas, University of Wisconsin-Madison

Longitudinal item response model and missing data in educational intervention

Discussants

Robert Ankenmann, University of Iowa

Liru Zhang, Delaware Department of Education

Thursday, April 27

10:35 – 12:05 P.M.

L4

Graduate Student Paper Session

Organizers

Michael S. Finger, University of Minnesota; Lora Monfils, Rutgers University

Moderator

Michael S. Finger, University of Minnesota

Presenters

Huan-Wen Chen, Michael Kolen, University of Iowa

Linking ITBS survey tests to complete tests using six different methods with two different designs

Russell W. Smith, University of Nebraska-Lincoln

An exploratory analysis of item parameters and characteristics that influence item response time

Pui-Wa Lei, University of Iowa

A comparison of parametric and nonparametric approaches to item analysis for multiple-choice tests

Ahmet Turhan, Akihito Kamata, Florida State University

Robustness of multiple-group IRT vertical equating to violation of the unidimensionality assumption

Discussants

Sue Brookhart, Duquesne University

Judy Spray, ACT, Inc.

Thursday, April 27

12:25 – 1:55 P.M.

M1

Minority Issues and Testing — Minority Issues Committee Session

No session information available at press time

Thursday, April 27

12:25 – 1:55 P.M.

M2

The ACT/NAGB Standard-Setting Method: The Results of Eight Years of Development — Coordinated Paper Session

Organizer/Moderator

Mark D. Reckase, Michigan State University

Presenters

Mary Lyn Bourque, National Assessment Governing Board

Student performance standards: The role of achievement level descriptions in the standard setting process

Susan Cooper Loomis, ACT, Inc.

Feedback data for the NAEP achievement levels-setting process: A decade of refinements

Wen-Ling Yang, ACT, Inc.; Wen-Hung Chen, American Institutes for Research

From ratings to cutpoints: Statistical techniques for NAEP achievement level setting

Mark D. Reckase, Michigan State University

The ACT/NAGB standard setting process: How "modified" does it have to be before it is no longer a Modified Angoff Process?

Discussants

Stephen Ferrara, American Institutes for Research

John J. Norcini, Jr., American Board of Internal Medicine

St. Claude, 3rd Floor
Le Meridien Hotel

Thursday, April 27

12:25 – 1:55 P.M.

M3

The State-of-the-Art in Computer-Automated Scoring for Performance Assessments — Symposium

Organizer Brian E. Clauser, National Board of Medical Examiners

Moderator Stephen G. Sireci, University of Massachusetts at Amherst

Presenters

Robert J. Mislevy, Linda S. Steinberg, Educational Testing Service;

F. Jay Breyer, Chauncey Group International;

Russell G. Almond, Educational Testing Service;

Lynn Johnson, University of Iowa

Making sense of data from complex assessments

Brian E. Clauser, Polina Harik, Stephen G. Clyman, National Board of Medical Examiners;

The generalizability of scores for a performance assessment scored with a computer-automated scoring system

Tom Landauer, University of Colorado, Boulder

Computer essay scoring with latent semantic analysis: A review and progress report

David M. Williamson, Anne S. Hone, Chauncey Group International;

Susan S. Miller, Isaac I. Bejar, Educational Testing Service

Kohonen self-organizing maps in validity maintenance for automated scoring of constructed response

Discussants

Ronald K. Hambleton, University of Massachusetts at Amherst

Michael Kane, University of Wisconsin

Ile de France I, 3rd Floor
Le Meridien Hotel

Thursday, April 27

12:25 – 1:55 P.M.

M4

Applying the New Standards with Operational Testing Programs — Invited Discussion

Organizer

Daniel R. Eignor, Educational Testing Service

Moderator:

Michael J. Kolen, University of Iowa

Presenters:

Wendy M. Yen, CTB/McGraw-Hill

Cynthia B. Schmeiser, ACT, Inc.

Ellen R. Julian, Association of American Medical Colleges

Neal M. Kingston, Advanced Systems

Daniel R. Eignor, Educational Testing Service

Thursday, April 27

2:15 – 3:45 P.M.

N1

Response Time and DIF in CAT — Paper Session

Moderator

Tianyou Wang, ACT, Inc.

Presenters

Eiji Muraki, Educational Testing Service;

Jimmy de la Torre, University of Illinois, Urbana-Champaign

An application of Samejima's continuous response model to GRE response time

Pankaja Narayanan, Robin Durso, Educational Testing Service;

Louis Roussos, Law School Admission Council

Impact of time-usage strategies on examinee performance: An investigation using examinee item response time data

Ratna Nandakumar, University of Delaware;

Louis Roussos, Law School Admission Council;

Julie Cwikla, University of Delaware

DIF assessment of CAT data: Kernel-smoothed CATSIB

Douglas R. Ripkey, Susan M. Case, David B. Swanson,

National Board of Medical Examiners

Using hierarchical linear modeling to examine factors influencing item response times in computer-based testing

Discussants

Cynthia G. Parshall, University of South Florida

David J. Scrams, Microsoft Corporation

Thursday, April 27

2:15 – 3:45 P.M.

N2

Testing over the Internet: Examples of Types of Uses — Symposium

Organizer

Thanos Patelis, The College Board

Moderator

Maria Potenza, Microsoft Corporation

Presenters

Thanos Patelis, The College Board;

Walter D. Way, Educational Testing Service;

Scott Elliot, Vantage Technologies Knowledge Assessment

Developing a research plan for an online assessment program

Daniel G. Eignor, Educational Testing Service

Developing an online pretesting design for ACCUPLACER

Scott Elliot, Vantage Technologies Knowledge Assessment

ACCUPLACER: Online sensitivity review

Anne L. Harvey, Krishna Tateneni, Neil Dorans, Educational Testing Service

Comparing onsite and online standard setting methods for multiple levels of standards

Discussants

Howard Everson, The College Board

Mark D. Reckase, Michigan State University

Suite 801, 8th Floor,
Le Meridien Hotel

Thursday, April 27

2:15 – 3:45 P.M..

N3

The Development and Application of Multi-Stage Testlet-Based Designs for Computerized Adaptive Testing — Symposium

Organizer/Moderator

Lynda M. Reese, Law School Admission Council

Presenters

Ronald D. Armstrong, Douglas H. Jones, Nicole Koppel, Rutgers University;

Peter J. Pashley, Law School Admission Council

Computerized adaptive testing with multiple forms structures

Richard M. Luecht, University of North Carolina at Greensboro

Implementing the computer adaptive sequential testing framework to mass produce high quality computer adaptive and mastery tests

Lori D. McLeod, Louis A. Roussos, Law School Admission Council

An investigation of various multiple-forms structure designs

David Thissen, University of North Carolina at Chapel Hill

Results obtained using various methods for scoring adaptive tests based on multiple-forms structures

Discussants

Wim J. van der Linden, University of Twente

Daniel O. Segall, Defense Manpower Data Center

Ile de France III, 3rd Floor
Le Meridien Hotel

Thursday, April 27

4:05 – 5:35 P.M.

O1

Educating Assessment Professionals for Applied Settings — Symposium

Organizer/Moderator

William D. Schafer, University of Maryland

Presenters

Timothy N. Ansley, University of Iowa

Recruitment, prerequisites, and coursework for training applied measurement professionals

Arlen Gullickson, Western Michigan University

Providing assessment training using an intensive continuing education model

William D. Schafer, University of Maryland

Educating applied assessment professionals at the master's level

Steven L. Wise, T. Dary Erwin, James Madison University

Developing professionals in applied assessment and measurement: The James Madison University model

Discussants

Steven Ferrara, American Institutes for Research

Marjorie M. Mastie, Washtenaw Intermediate School District, Ann Arbor

Thursday, April 27

4:05 – 6:05 P.M.

O2

DIF Issues — Paper Session

Moderator

Seock-Ho Kim, University of Georgia

Presenters

H. Jane Rogers, Columbia University;

Hariharan Swaminathan, University of Massachusetts at Amherst

Identification of factors that contribute to DIF: A hierarchical modeling approach

David J. Scrams, Microsoft Corporation

Lori D. McLeod, Law School Admission Council

An expected response function approach to graphical differential item functioning

Michael G. Jodoin, Mark J. Gierl, University of Alberta

Reducing type I error rates using an effect size measure with the logistic regression procedure for DIF detection

Daniel M. Bolt, University of Wisconsin-Madison

The effects of model misspecification on detection of DIF in polytomously-scored items

Patrick O. Monahan, University of Iowa

The effect of unequal variances in the ability distributions on the type I error rate of the Mantel-Haenszel chi-square test for detecting DIF

Discussants

Ann W. French, ACT, Inc.

Allen E. Doolittle, Advanced Systems

Thursday, April 27

4:05 – 6:05 P.M.

O3

Comparability Issues in Test Assembly, Test Translation, and Item Context — Paper Session

Moderator

Terry Ackerman, University of North Carolina, Greensboro

Presenters

Mark J. Gierl, Shameem Nyla Khaliq, University of Alberta

Identifying sources of differential item and bundle functioning on translated tests
Iosif A. Krass, Defense Manpower Data Center

Change in distribution of latent ability with item position in a CAT sequence
Jae-Chun Ban, Tianyou Wang, Qing Yi, Deborah J. Harris, ACT, Inc.

Effects of nonequivalence of item pools on ability estimates in CAT
Frederic Robin, Dehui Xing, University of Massachusetts at Amherst;

David J. Scrams, Maria Potenza, Microsoft Corporation

Comparison of linear and computerized adaptive mastery testing designs

Chuan-Ju Lin, University of Iowa; Judy Spray, ACT, Inc.;

Walter Vispoel, University of Iowa

Automated test assembly—Comparison between classical test theory and item response theory in assembling parallel forms

Discussants

Neal Kingston, Advanced Systems

Mark D. Reckase, Michigan State University

Ile de France III, 3rd Floor
Le Meridien Hotel

Thursday, April 27

4:00 – 7:00 P.M.

NCME Board of Directors Meeting

Members are invited to attend as observers.

St. Charles, 41st Floor
Marriott Hotel

ADDRESSES

- Ackerman, Terry**, Professor, University of North Carolina-Greensboro, 207 Curry Bldg, PO Box 26171, Greensboro, NC 27402-6171
- Akindele, Shola**, University of British Columbia, ECPS, Faculty of Education, 2125 Main Hall, Vancouver, BC V6T 1Z4 Canada
- Allen, Nancy L.**, Educational Testing Service, Mail Stop 02-T, Rosedale Rd, Princeton, NJ 08541
- Ansley, Timothy**, University of Iowa, Lindquist Center, Iowa City, IA 52242,
- Arce-Ferrer, Alvaro**, Autonomous University of Yucatan, C/O Dave Frisbie, 316 Lindquist Center, University of Iowa, Iowa City, IA 52242
- Armstrong, Ronald**, Rutgers University, RUTCOR, PO Box 5062, New Brunswick, NJ 08903
- Attali, Yigal**, National Institute for Testing and Evaluation, PO Box 26015, Jerusalem 91260 Israel
- Bachman, Lyle F.**, Professor, University of California at LA, Dept Applied Linguistics & TESL, 3300 Rolfe Hall, 405 Hilgard Ave, PO Box 95131, Los Angeles, CA 91095-1531
- Baker, Eva**, UCLA/CRESST, University of California, Los Angeles, CA 90095
- Ban, Jae-Chun**, ACT Inc., 2255 N Dodge Street, PO Box 168, Iowa City, IA 52243-0168
- Barclay McKeown, Stephanie**, University of British Columbia, ECPS, Faculty of Education, 2125 Main Hall, Vancouver, BC V6T 1Z4 Canada
- Baron, Patricia**, Educational Testing Service, MS 15-L, Princeton, NJ 08541.
- Barton, Karen E.**, University of South Carolina, 503 Florikan Circle, Goose Creek, SC 29445
- Bay, Luz G.**, Advanced Systems, 171 Watson Rd, Dover, NH 03820
- Beguin, Anton A.**, University of Twente, PO Box 217, 7500 AE Enschede, The Netherlands
- Ben-Simon, Anat**, National Institute for Testing and Evaluation, PO Box 26015, Jerusalem 91260 Israel
- Bereby-Meyer, Yoella**, Ben-Gurion University of the Negev, School of Education, Beer-Shava, Israel
- Berk, Ronald**, Johns Hopkins University, 10971 Swansfield Rd, Columbia, MD 21044
- Betebenner, Damian W.**, University of Colorado, Boulder, Campus Box 249, School of Education, Boulder, CO 80309-0249
- Bishop, N. Scott**, University of Iowa, 2508 Clearwater Ct, Iowa City, IA 52246
- Bolt, Daniel M.**, University of Wisconsin-Madison, Dept of Educational Psychology, 1025 W Johnson St, Rm 859, Madison, WI 53706
- Bond, Lloyd**, University of North Carolina, School of Education, Greensboro, NC 27412-5001
- Boughton, K.A.**, University of Alberta, CRAME, 6-110 Education N, Edmonton, AB T6G 2G5 Canada
- Bourque, Mary Lyn**, National Assessment Governing Board, 800 N Capital St NW, Washington, DC 20002-4233
- Breland, Hunter M.**, Educational Testing Service, Rosedale Rd, Mail Stop 12-R, Princeton, NJ 08541
- Brennan, Robert L.**, Professor, University of Iowa, 334A Lindquist Center, Iowa Testing Programs, College of Education, Iowa City, IA 52242
- Bridgeman, Brent**, Educational Testing Service, MS 90-R, Princeton, NJ 08541
- Buckendahl, Chad W.**, University of Nebraska-Lincoln, 135 Bancroft Hall, UNL, Lincoln, NE 68588-0352
- Burdenski, Thomas K.**, Texas A&M University, Dept. of Ed Psychology, College of Education, College Station, TX 77843-4225
- Burton, Elizabeth**, Aurora Public Schools, 15751 E. First Ave., Aurora, CO 80011
- Capar, Nulfer**, Florida State University, 307 Stone Building, Tallahassee, FL 32306
- Cerrillo, Tracy L.**, University of Pittsburgh, 5C01 Forbes Quadrangle, Pittsburgh, PA 15260
- Chang, Hua-Hua**, National Board of Medical Examiners, 3750 Market St, Philadelphia, PA 19104
- Chang, Shun-Wen**, National Taiwan Normal University, The Dept of Education Psychology & Counseling, 162 Sec 1 Ho-Ping E Rd., Taipei, Taiwan 10610
- Chartrand, Anne**, National Computer Systems, 3310 Dresden Dr, Montgomery, AL 36111
- Chen, Huan-Wen**, University of Iowa, 418 Hawkeye Dr, Iowa City, IA 52246
- Chiu, Chris W.**, University of Pittsburgh, 101 N. Dithridge St., #1004 Webster Hall, Pittsburgh, PA 15213
- Cizek, Gregory**, University of North Carolina at Chapel Hill, Chapel Hill, North Carolina 27599
- Clauser, Brian E.**, National Board of Medical Examiners, 3750 Market St, Philadelphia, PA 19104
- Cohen, Jon**, American Institutes for Research, 1000 Thomas Jefferson St NW, Washington, DC 20007
- Colte, Nancy**, President, Educational Testing Service, Rosedale Rd, Princeton, NJ 08541
- Colton, Dean A.**, ACT, Inc., PO Box 168, Iowa City, IA 52243
- Crone, Carolyn**, Educational Testing Service, Mail Stop 15-L, Princeton, NJ 08541
- Dawber, Tess**, University of Alberta, CRAME, 6-110 Education N, Edmonton, AB T6G 2G5 Canada
- Davey, Tim**, ACT, Inc., 2201 N Dodge St, PO Box 168, Iowa City, IA 52243
- De Champlain, Andre F.**, National Board of Medical Examiners, 3750 Market St, Philadelphia, PA 19104
- De Vito, Pasquale**, Rhode Island Dept. of Education, Office of Assessment & Info Svcs, Shepard Bldg, Rm 512, 255 Westminster St, Providence, RI 02903-3400
- Deng, Hui**, The University of Iowa, 346 Lindquist Center, Iowa City, IA 52242
- Donahue, Barbara**, University of Georgia, 325 Aderhold, College of Education, Athens, GA 30602
- Donoghue, John R.**, Rosedale Rd, Mail Stop 02-T, Princeton, NJ 08541
- Eignor, Daniel R.**, Principal Measurement Specialist, Educational Testing Svc, Language Learning and Assessment Group, Research Div, Princeton, NJ 08541
- Elliot, Scott**, Vantage Technologies Knowledge Assessment, 113 Floral Vale Blvd, Yardley, PA 19067
- Embreton, Susan**, University of Kansas, Dept. of Psychology, Lawrence, KS 66045
- Fan, Meichu**, ACT, Inc., 2201 N Dodge St, PO Box 168, Iowa City, IA 52243
- Feuer, Michael**, National Academy of Sciences, 2101 Constitution Ave NW, Washington, DC 20418
- Fitzpatrick, Anne R.**, CTB/McGraw-Hill, 20 Ryan Ranch Rd, Monterey, CA 93940
- Friedman, Steven**, University of Wisconsin at Whitewater, 800 W Main St, Whitewater, WI 53190
- Gao, Xiaohong**, ACT, Inc., PO Box 168, Iowa City, IA 52243-0168

Gierl, Mark J., University of Alberta, Crame, 6-110 Education North, Faculty of Education, Edmonton, AB, T6G 2G5 Canada

Glas, Cees A. W., University of Twente, TO/OMD, PO Box 217, 7500 AE Enschede, The Netherlands

Gullickson, Arlen, Western Michigan University, The Evaluation Center, Kalamazoo, MI 49008

Guo, Fanmin, Educational Testing Service, Mail Stop 13-L, Rosedale Rd, Princeton, NJ 08541

Habing, Brian T., University of South Carolina, Department of Statistics, Columbia, SC 29208

Ham, Hazen, American Board of Emergency Medicine, 3000 Coolidge Rd, East Lansing, MI 48823

Hambleton, Ronald K., University of Massachusetts, Hills South Rm 152, Amherst, MA 01003

Hansen, Joe, 271 W Ridge Dr, Woodland Park, CO 80863

Hansen, Mary A., University of Pittsburgh, 5C01 Forbes Quadrangle, Pittsburgh, PA 15260

Hanson, Bradley A., Sr. Psychometrician, ACT, Inc., PO Box 168, Iowa City, IA 52243

Hartz, Sarah M., University of Illinois @ Urbana-Champaign, 725 S Wright St, Rm 101, Champaign, IL 61820

Harvey, Anne L., Educational Testing Service, Mail Stop 15L, Rosedale Rd, Princeton, NJ 08541

Hellsten, L.M., University of Alberta, CRAME, 6-110 Education N, Edmonton, AB T6G 2G5 Canada

Hendrickson, Amy, University of Iowa, 323 Lindquist Center, ITP, Iowa City, IA 52242

Hoffman, R. Gene, HumRRO, 295 W Lincoln Trail Blvd., Radcliff, KY 40160

Holland, Paul W., Professor, Tolman Hall #1670, University of California, Berkeley, CA 94720-1670

Huesman, Ronald L., The University of Iowa, Evaluation & Examination Service, 300 Jefferson Bldg, Iowa City, Iowa 52242-1470

Huynh, Huynh, University of South Carolina, College of Education, Columbia, SC 29208

Iwamoto, Carolyn K., National Board of Medical Examiners, 3750 Market Street, Philadelphia, PA 19104

Jakwerth, Pamela M., American Institutes for Research, 1791 Arastradero Rd, PO Box 113, Palo Alto, CA 94302-1113

Jodoin, Michael G., University of Massachusetts at Amherst, Rm 152 Hills South, Amherst, MA 01003

Johnson, Eugene, G., Chief Psychometrician, American Institutes for Research, 1000 Thomas Jefferson St NW, Washington, DC 20007

Johnson, Sylvia T., Howard University, 301 Gilsan Ct, Silver Springs, MD 20902

Julian, Ellen R., Ph.D., Asst. VP and Dir. Medical College Admission, Association of American Medical Colleges, 2450 N St NW, Washington, DC 20037

Kalohn, John, ACT, Inc., Research and Psychometric Services, PO Box 168, Iowa City, IA 52243

Kane, Michael, University of Wisconsin, 2000 Observatory Dr, Madison, WI 53706

Kaskowitz, Gary S., University of Maryland, 41 Treworthy Rd, Gaithersburg, MD 20878-2620

Kelkar, Vinaya, University of North Carolina at Greensboro, UNC-GERM School of Education, 210 Curry Bldg, Spring Garden St., Greensboro, NC 27412-5001

Keller, Lisa A., University of Massachusetts, 158 Hills South, Amherst, MA 01003

Kenney, Patricia A., 712 LRDC University of Pittsburgh, 3939 O'Hara St, Pittsburgh, PA 15260

Khaliq, Shameen Nyla, University of Alberta, CRAME, 6-110 Education N, Edmonton, AB T6G 2G5 Canada

Kieffer, Kevin M., 19424 Via Del Mar #205, Tampa, FL 33647

Kim, Sooyeon, The University of Georgia, 320B Alderhold Hall, Athens, GA 30602

King, Jason E., Texas A&M University, 6149 Sundown Dr, Ft. Worth, TX 76114

Kingston, Neal M., Advanced Systems, 171 Watson Rd, Dover, NH 03820

Kolen, Michael J., University of Iowa, 224C Lindquist Center, Iowa City, IA 52242

Kortez, Daniel, Professor, Boston College, Champion Hall 323, Chestnut Hill, MA 02467

Krass, Isif A., Defense Manpower Data Center, DoD Center-Monterey Bay, 400 Gigling Rd, Seaside, CA 93955-6771

Landauer, Tom, University of Colorado, Dept of Psychology and Institute of Cognitive Science, Campus Box 344, Boulder, CO 80309-0344

Lane, Suzanne, University of Pittsburgh, 5C01 Forbes Quadrangle, Pittsburgh, PA 15260

Lee, Won-Chan, ACT, Inc., 2201 N Dodge St, PO Box 168, Iowa City, IA 52243

Lee, Young-Sun, University of Wisconsin-Madison, 1025 W Johnson St, Rm 373, Madison, WI 53706

Lei, Pui-Wa, University of Iowa, 224A1 Lindquist Center, Iowa City, IA 52242

Leung, Chi-Keung C.K., Hong Kong Institute of Education, Dept. of Math, 10 Lo Ping Road, Tai Po, Hong Kong

Lewis, Daniel M., CTB/McGraw-Hill, 20 Ryan Rd, Monterey, CA 93940

Lin, Chuan-Ju, The University of Iowa, 326 Hawkeye Dr, Iowa City, IA 52246

Liu, Yuming, The University of Iowa, 556 Hawkeye Ct, Iowa City, IA 52246

Livingston, Samuel A., Educational Testing Service, Princeton, NJ 08541

Lohss, William E., ACT, Inc., 2201 N Dodge St, PO Box 168, Iowa City, IA 52243

Loomis, Susan, ACT, Inc., PO Box 168, Iowa City, IA 52243

Luecht, Richard M., Professor, Educational Research Methodology, University of North Carolina at Greensboro, Curry Bldg 209, Greensboro, NC 27402-6171

Margolis, Melissa J., National Board of Medical Examiners, 3750 Market St, Philadelphia, PA 19104

McLeod, Lori D., Law School Admission Council, 661 Penn St, Box 40, Newtown, VA 18940

McMillan, James H., Virginia Commonwealth University, Box 842020, Richmond, VA 23284-2020

Meijer, Rob R., University of Twente, TO/OMD, PO Box 217, 7500 AE Enschede, The Netherlands

Meloy, Linda, Western Illinois University, Department of Special Education, Regional Center, 3561-60th St, Moline, IL 61265

Miller, M. David, University of Florida, PO Box 117047, 1403 Norman Hall, Gainesville, FL 32611

Miller, Timothy R., ACT, Inc., 2201 N Dodge St, PO Box 168, Iowa City, IA 52273-0168

Mislevy, Robert J., Educational Testing Service, Mail Stop 03-T, Princeton, NJ 08648

Monahan, Patrick O., University of Iowa, N476 Lindquist Center, Iowa City, IA 52242

Muraki, Eiji, Educational Testing Service, Rosedale Rd, Princeton, NJ 08541

Nandakumar, Ratna, University of Delaware, 213 Willard Hall, School of Education, Newark, DE 19716

Narayanan, Pankaja, Educational Testing Service, Mail Stop 53-L, Rosedale Road, Princeton, NJ 08541

Ochieng, Charles, University of British Columbia, ECPS, Faculty of Education, 2125 Main Hall, Vancouver, BC V6T 1Z4 Canada

Parke, Carol S., West Virginia University, 653 Oberg Dr., Freeport, PA 16229

Parshall, Cynthia G., IIRP, USF HMS 401, Tampa, FL 33620

Paskus, Thomas S., University of Denver, College of Education, Denver, CO 80208

Patelis, Thanos, The College Board, 45 Columbus Ave, New York, NY 10023-6992

Patsula, Liane N., Educational Testing Service, Mail Stop 13-L, Rosedale Rd., Princeton, NJ 08541

Patz, Richard J., CTB/McGraw-Hill, 20 Ryan Ranch Rd, Monterey, CA 93940

Peters, Charles W., Oakland Schools, English Language Arts Unit, 2100 Pontiac Lake Rd, Waterford, MI 48328

Phillips, Susan E., College of Education-CEPSE, Michigan State University, East Lansing, MI 48824

Pommerich, Mary, ACT, Inc., 2201 N Dodge St, PO Box 168, Iowa City, IA 52243

Rattenborg, Steve, Minnesota Dept. of Children, Families, and Learning, 1300 Hwy 36W, Roseville, MN 55113

Reckase, Mark D., Michigan State University, 461 Erickson Hall, East Lansing, MI 48824-1034

Ripkey, Douglas R., National Board of Medical Examiners, 3750 Market St, Philadelphia, PA 19104

Rizavi, Saba, University of Massachusetts at Amherst, 223 Prince House, Amherst, MA 01003

Robin, Frederic, University of Massachusetts at Amherst, 149A Hills South, Amherst, MA 01003-4140

Rogers, H. Jane, Teachers College Columbia University, Dept of Human Development, 525 W 120th St, New York, NY 10027-6696

Rosen, Gerald, Sylvan Prometric, 3435 Central Ave, Huntingdon Valley, PA 19006

Samejima, Fumiko, University of Tennessee, 311 Austin Peay Bldg, Knoxville, TN 37996-0900

Sawyer, Richard L., ACT, Inc., 2255 N Dodge St, PO Box 168, Iowa City, IA 52243-0168

Schaeffer, Gary A., CTB/McGraw-Hill, 20 Ryan Ranch Rd., Monterey, CA 93940

Schafer, William D., University of Maryland, EDMS, College of Education, College Park, MD 20742-1115

Schmeiser, Cynthia B., ACT, P.O. Box 168, Iowa City, Iowa 52243-0168

Scrums, David J., Microsoft Corp, Microsoft Way, Redmond, WA 98052-6399

Segall, Daniel O., Defense Manpower Data Center, DoD Center Monterey Bay, 400 Gigling Rd, Seaside, CA 93955-6771

Shepard, Lorrie A., University of Colorado at Boulder, 124 Education Bldg., CB 249, Boulder, CO 80309-0249

Shermis, Mark D., IUPUI Testing Center, 620 Union Dr, Ste G003, Indianapolis, IN 46202

Simpson, M.A., Dept. of Ed Research & Methodology, School of Education, UNCG, Greensboro, NC 27402

Sireci, Stephen G., University of Massachusetts at Amherst, 156 Hills South, School of Education, Amherst, MA 01003-4140

Skakun, Ernest N., University of Alberta, Division of Studies on Medical Education, 213 Walter Mackenzie Centre, Edmonton, AB, T6G 2R7 Canada

Slawski, Ed, The Psychological Corporation, 555 Academic Court, San Antonio, TX 78204-2498

Smith, Jeffrey K., Rutgers University, 10 Seminary Place, New Brunswick, NJ 08902

Smith, Russell W., University of Nebraska-Lincoln, Bueros Center for Testing, 135 Bancroft Hall, PO Box 880352, Lincoln, NE 68588

Stansfield, Charles, Second Language Testing, Inc., 10704 Mist Haven Terrace, North Bethesda, MD 20852

Stark, Stephen E., University of Illinois at Urbana-Champaign, Dept of Psychology, 603 E Daniel St, Champaign, IL 61820

Stiggins, Rick, Assessment Training Institute, 50 SW 2nd Ave, Ste 300, Portland, OR 97204

Stofflet, Fredrick, Anchorage School District, PO Box 196614, Anchorage, AK 99519

Stone, Clement A., University of Pittsburgh, 5C01 Forbes Quadrangle, Pittsburgh, PA 15260

Strozeski, Mike, Garland ISD, 870 W Buckingham Rd, Garland, TX 75040

Sullivan, Richard B., The University of Iowa, Iowa Testing Programs, 346 Lindquist Center, Iowa City, IA 52242-1529

Swaminathan, Hariharan, University of Massachusetts, School of Education, 150 Hills South, Amherst, MA 01003-4140

Sweeney, Kevin P., Advanced Systems, 171 Watson Rd, Dover, NH 03820

Taheribhai, Husein M., University of Pittsburgh, 3939 O'Hara St, 739 LRDC, Pittsburgh, PA 15260

Taylor, Catherine S., University of Washington, 312 Miller Hall, Box 353600, UW, Seattle, WA 98195-3600

Thayer, Dorothy T., Educational Testing Service, Rosedale Rd, Princeton, NJ 08541

Thissen, David, University of North Carolina, Chapel Hill, CB #3270, Davie Hall, Chapel Hill, NC 27599

Thomas, Susan J., IBM Corporation, 106 E Delaware Ave., Pennington, NJ 08534

Thompson, Tony, ACT, Inc., PO Box 168, Iowa City, IA 52243

Thornton, Andrea E., Law School Admission Council, 661 Penn St, Box 40, Newtown, PA 18940

Tobias, Robert, New York City Board of Education, 110 Livingston St, New York, NY 11758

Turhan, Ahmet, 2203 W Pensacola St I-3, Tallahassee, FL 32304

Van Krimpen-Stoop, Edith, M.L.A., University of Twente, TO/OMD, PO Box 217, 7500 AE Enschede, The Netherlands

Van der Linden, Wim J., University of Twente, TO/OMD, PO Box 217, 7500 AE Enschede, The Netherlands

Vos, Hans J., University of Twente, TO/OMD, PO Box 217, 7500 AE Enschede, The Netherlands

Wallace, Marjorie, R., Michigan State University, 513B Erickson Hall, East Lansing, MI 48824-1034

Wang, Ning, Assessment Systems, Inc., 3 Bala Plaza W, Ste 300, Bala Cynwyd, PA 19004

Wendler, Cathy LW, Educational Testing Service, MS 04-L, Princeton, NJ 08541.

Widiatmo, Heru, ACT, Inc., PO Box 168, Iowa City, IA 52243

Williamson, David M., The Chauncey Group International, 664 Rosedale Rd, Princeton, NJ 08540

Wise, Lauress, Human Resources Research Organization, 66 Canal Center Plaza, Ste 400, Alexandria, VA 22314

Wise, Steven L., James Madison University, Center for Assessment and Research Studies, MSC 9001, Harrisonburg, VA 22807

Yang, Wen-Ling, American Institute for Research, 1000 Thomas Jefferson St NW, Washington, DC 20007

Yen, Shu Jing, Maryland State Department of Education, 200 W Baltimore St, Baltimore, MD 21201-2595

Yen, Wendy, CTB/McGraw-Hill, 20 Ryan Ranch Rd, Monterey, CA 93940

Yi, Qing, ACT, Inc., 2255 N Dodge St, PO Box 168, Iowa City, IA 52243

Yoon, Bokhee, University of California, 300 Lakeside Dr, 7th Fl, Oakland, CA 94612

Yu, Feng, American Institute for Research, 6166 Leesburg Pike #C205, Falls Church, VA 22044

Zenitsky, April L., University of Massachusetts at Amherst, Hills South, Rm 152, Amherst, MA 01003

Zhang, Jimming, Educational Testing Service, Mail Stop 02-T, Rosedale Rd, Princeton, NJ 08541

Zumbo, Bruno D., Professor, University of Northern British Columbia, Dept of Psychology, Prince George, BC, V2N 4Z9 CANADA

INDEX TO SESSIONS FOR ALL PROGRAM PARTICIPANTS

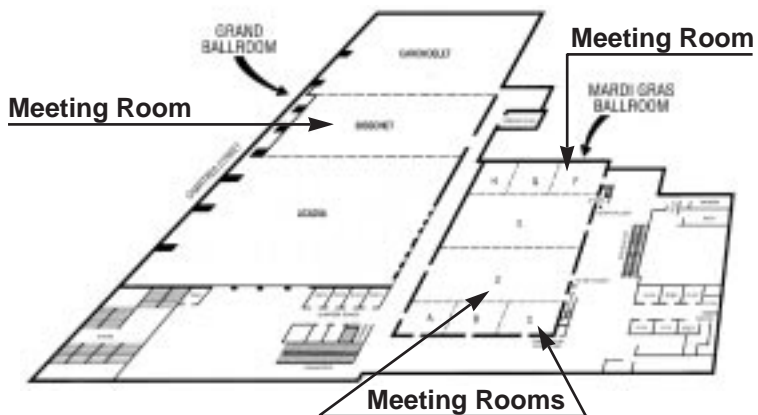
Ackerman, Terry	H3, O3	Colton, Dean A.	C4	Hanson, Bradley A.	A1, C4, I3, J4, J5
Akindele, Shola	D1	Cook, Linda	C3, G2	Harik, Polina	L2, M3
Albanese, Mark	E1	Cramer, Steve	E1	Harris, Deborah J.	J4, J5, O3
Allen, Nancy L.	D4	Crick, Joe	I3	Harris, Sandra M.	J2
Almond, Russell G.	M3	Crocker, Linda	G4	Harter, James	C3
Althouse, Linda	E1	Crone, Carolyn	I1	Hartz, Sarah M.	L3
Ankenmann, Robert	L3	Curley, W. Edward	I1	Harvey, Anne L.	N2
Ansley, Timothy N.	J2, O1	Cwikla, Julie	N1	Harwell, Michael R.	J4
Arce-Ferrer, Alvaro	C4	Dawber, Tess	D1	Hau, Kit-Tai	A2
Armstrong, Ronald D	N3	Davey, Tim	D3, G2, H2, K3	Hellsten, L.M.	D1
Attali, Yigal	G2	Davison, Mark L.	D4	Henderson, D.L.	D1
Bachman, Lyle F.	H3	de la Torre, Jimmy	N1	Hendrickson, Amy	A3
Baker, Eva	G4	De Ayala R.J.	J4	Henning, Sara S.	L3
Ban, Jae-Chun	O3	De Champlain, Andre F.	C4, D4, L1	Henson, Robin K.	D1
Barclay McKeown,		De Vito, Pasquale	K1	Hill, Richard	D4
Stephanie	D1	DeLiberto, Deanna M.	B3	Hoffman, R. Gene	C4
Bar-Hillel, Maya	G2	Deng, Hui	J2	Hogarty, Kristin Y.	A2
Baron, Patricia	I1	Deville, Craig	G3, H3	Holland, Paul W.	A1, D4
Barton, Karen	G3	DiBello, Louis V.	L3	Hombo, Catherine M.	B3
Bay, Luz G.	E1, K2	Dillingham, Alan	E1	Hone, Anne S.	M3
Beguín, Anton A.	J5	Donahue, Barbara	E1	Hoover, H.D.	E3, H1
Bejar, Isaac I.	M3	Donoghue, John R.	B3	Hoskens, Machteld	L3
Beller, Michal	C3	Doolittle, Allen E.	O2	Huesman, Ronald L.	G3
Bene, Nancy	B2	Dorans, Neil	N2	Huynh, Huynh	B2, E1, G3
Ben-Simon, Anat	G2	Douglas, Jeffrey	L3	Impara, James C.	L1
Ben-Shakhar, Gershon	G2	Dragow, Fritz	J4	Irwin, Patrick M.	L1
Benson, Jeri	E1	Dunbar, Stephen B.	J2	Iwamoto, Carolyn K.	H2
Bereby-Meyer, Yoella	G2	Durso, Robin	N1	Jakwerth, Pamela	G3
Berk, Ronald A.	E3	Eignor, Daniel G.	C1, H3, M4, N2	Joachim, Meyer	G2
Betebenner, Damian W.	J1	Elliot, Scott	N2	Jodoin, Michael G.	O2
Beyer, Julia	D4	Elliott, Stephen N.	G3	Johnson, Eugene G.	A1, E2
Bhola, Dennison	C3	Elmore, Patricia B.	E1	Johnson, Lynn	M3
Bianchi, Leonard	L1	Embretson, Susan	H1	Johnson, Sylvia T.	E3
Bishop, N. Scott	D1	Engelhard, George Jr.	B3	Jones, Douglas H.	N3
Bolt, Daniel M.	O2	Erwin, T. Dary	O1	Julian, Ellen R.	A3, J1, M4
Bond, Lloyd	E3, I1	Everson, Howard	N2	Julian, Marc W.	J4
Boughton, K.A.	D1	Fan, Meichu	K3	Junker, Brian W.	L3
Bourque, Mary Lyn	M2	Featherman, Carol M.	H2	Kalohn, John	D3
Breland, Hunter M.	D4	Feigenbaum, Miriam	I1	Kane, Michael	G4, M3
Brennan, Robert L.	A1, B3, C4,	Fenton, Ray	C2	Kamata, Akihito	L4
	G4, I3	Ferrara, Steven	I2, M2, O1	Kaskowitz, Gary S.	J4
Breyer, F. Jay	M3	Feuer, Michael	K1	Kelkar, Vinaya	A3
Bridgeman, Brent	I1	Finger, Michael S.	L4	Keller, Lisa	L2
Brookhart, Sue	L4	Fitzpatrick, Anne R.	B1, C4, D4	Kenney, Patricia	E2
Buckendahl, Chad W.	L1	Forsyth, Robert	K2	Khalig, Shameen Nyla	D1, O3
Budescu, David V.	G2	Frechtling, Joy A.	L2	Kieffer, Kevin M.	D1
Burden, Timothy	K3	French, Ann W.	O2	Kim, Seock-Ho	O2
Burdenski, Thomas K.	D1	Friedman, Steven	B4	Kim, Sooyeon	D1
Burton, Elizabeth	L2	Frisbie, David A.	C4, G3	King, Jason E.	D1
Caper, Nilufer	H2	Gao, Furong	D4	Kingsbury, Gage	A2
Carlson, James	I3	Gao, Xiaohong	B3	Kingston, Neal M.	K2, M4, O3
Case, Susan M.	N1	Geisinger, Kurt F.	C3	Kissling, Grace	D1
Cerrillo, Tracy L.	C1, I2	Gessaroli, Marc E.	D4	Klass, Daniel J.	L1
Chalabou-Deville, Micheline	H3	Gierl, Mark J.	O2, O3	Klinger, D.A.	D1
Chang, Hua-Hua	A2, J3	Gipps, Caroline	D2	Knowles, Kaeli	K1
Chang, Shun-wen	J4	Glas, Cees A.W.	J3, J5	Koenig, Judy	K1
Chartrand, Anne	C2	Green, Bert	A2	Kolen, Michael J.	C4, E2, F1, K1,
Chase, Clint I.	B2	Gullickson, Arlen	O1		L4, M4
Chen, Huan-Wen	L4	Guo, Fanmin	D3	Kolstad, Andrew	L3
Chen, Wen-Hung	M2	Habing, Brian T.	J2	Koppel, Nicole	N3
Chiu, Chris W.	B3, L2	Haertel, Edward H.	A1, E2	Koretz, Daniel	A1, K1
Cizek, Gregory	B4, E2	Haladyna, Thomas	J1	Krass, Iosif A.	O3
Clauser, Brian E.	L2, M3	Ham, Hazen	L1	Kromrey, Jeffrey D.	A2
Clyman, Stephen G.	L2, M3	Hambleton, Ronald K.	B1, C3, H1, M3	Landauer, Tom	M3
Cohen, Jon	L3	Hansen, Joe	C2	Lane, Suzanne	C1, I2
Cole, Nancy	G4	Hansen, Mary A.	I2	Lawrence, Ida	J5

Lee, Guemin	D4	Peters, Charles W.	E2	Swanson, David B.	L2, N1
Lee, Won-Chan	C4	Phillips, Susan E.	B4	Sweeney, Kevin P.	K2
Lee, Yong-Won	D4	Plake, Barbara S.	L1	Sweet, David	B1, C2
Lee, Young-Sun	L3	Pommerich, Mary	K3	Taherbhai, Husein M.	B3
Lei, Pui-Wa	L4	Potenza, Maria	K3, N2, O3	Tanner, John	K1
Leung, Chi-Keung C.K.	A2	Quero-Munoz, Lila J.	J2	Tateneni, Krishna	N2
Lewis, Daniel M.	K2	Rattenborg, Steve	K2	Taylor, Catherine S.	B2, J5
Lin, Chuan-Ju	O3	Reckase, Mark D.	G4, M2, N2, O3	Thayer, Dorothy T.	B3, D4
Linn, Robert	D2	Reese, Lynda M.	D3, N3	Thissen, David	B1, K3, N3
Lipner, Rebecca S.	J4	Reinhart, Mary Ann	L1	Thomas, Susan J.	E1
Liu, Yuming	D1	Reshetar, Rosemary	D3	Thompson, Tony D.	H2, K3
Livingston, Samuel A.	J1	Rindone, Douglas	K2	Thornton, Andrea E.	J1
Lohss, William F.	J5	Ripkey, Douglas R.	N1	Tobias, Robert	C2
Loomis, Susan Cooper	M2	Rizavi, Saba	D1, E1	Tomkowicz, Joanna	D1
Luecht, Richard M.	A3, N3	Robin, Frederic	O3	Turhan, Ahmet	L4
Maguire, Thomas O.	B2	Rodriguez, Georgette	E1	Tsai, Tsung-Hsun	J4
Margolis, Melissa J.	L1	Rogers, H. Jane	O2	Van den Heuvel, Jull R.	I2
Mastie, Marjorie M.	O1	Rosen, Gerald	D3	van der Linden, Wim J.	A2, E2, J3, N3
Maxey, E. James	J1	Roussos, Louis A.	N1, N3	van Krimpen-Stoop, Edith	J3
McArdle, John J.	J1	Samejima, Fumiko	A2, E3	Vispoel, Walter	O3
McLeod, Lori D.	H2, N3, O2	Sawyer, Richard L.	B2, J1	Vos, Hans J.	J3
McMillan, James H.	L1	Schaeffer, Gary A.	J4	Wallace, Marjorie R.	D1
Meijer, Rob R.	J3	Schafer, William D.	O1	Waltman, Kristie K.	L1
Meloy, Linda	G3	Scheuneman, Janice	H2	Wang, Lin	B3
Miller, M. David	B1, C2	Schiel, Jeff L.	J1	Wang, Ning	B2
Miller, Susan S.	M3	Schmeiser, Cynthia B.	B4, G4, H1, M4	Wang, Tianyou	N1, O3
Miller, Timothy R.	K3	Schmitt, Alicia	I1	Ware, Herbert W.	G3
Mills, Craig N.	A3, J3	Schmidt, Amy E.	I1, L1	Way, Walter D.	D3, K3, N2
Mislevy, Robert J.	D2, M3	Schratz, Mary	D4	Wedman, Ingemar	B2
Mittelholtz, David	G3	Schulz, E. Matthew	J1, J2	Welch, Catherine J.	G4, H1
Monahan, Patrick O.	O2	Scott, Kathryn	I2	Wendler, Cathy L W	I1
Morgan, Deanna L.	D1	Scrams, David J.	N1, O2, O3	West, R. Webster	J2
Muraki, Eiji	D4, I3, J4, N1	Segall, Daniel O.	H2, N3	Widiatmo, Heru	J5
Najarian, Michelle	D4	Shavelson, Richard	L1	Williams, Valerie S.L.	C4, E2
Nandakumar, Ratna	A2, N1	Shepard, Lorrie	D2	Williamson, David M.	M3
Narayanan, Pankaja	N1	Shermis, Mark D.	D3	Wilson, Mark R.	L3
Nering, Michael	A2	Simpson, M.A.	D1	Winter, Phoebe C.	B1, C2
Neustel, Sandra B.	D1	Sireci, Stephen G.	C3, E1, M3	Wise, Lauress L.	C4, K1
Newman, Larry	B2	Skaggs, Gary	I3, J5	Wise, Steven L.	O1
Nichols, Paul	L1	Skakun, Ernest N.	B2	Wispoel, Walter	O3
Ninneman, Anne	I1	Slawski, Ed	C1	Wollack, James	H2
Noeth, Richard	K1	Smith, Jeffrey K.	B4	Xing, Dehui	O3
Norcini, John J., Jr.	M2	Smith, Lisa	B4	Yang, Wen-Ling	M2
Nungester, Ronald J.	H2	Smith, Russell, W.	L4	Yang, Yongwei	C3
Ochieng, Charles	D1	Spray, Judy	D3, L4, O3	Yen, Shu Jing	B2
Oeschler, Jeff	G1	Stansfield, Charles	H3	Yen, Wendy M.	B1, I2, M4
Olson, John F.	B1, C2	Stark, Stephen E.	J4	Yi, Qing	J5, O3
Padula, Jennifer	I2	Steele, Bonita	D1	Yoon, Bokhee	L2
Parke, Carol S.	C1, I2, J2	Steinberg, Linda S.	M3	Young, Michael J.	B3, L2
Parkes, Jay T.	L2	Stiggins, Rick	G1, G4, H1	Yu, Feng	A2
Parshall, Cynthia G.	A2, D3, I3, N1	Stofflet, Frederick	C2	Zenisky, April L.	A3
Pashley, Peter J.	J1, N3	Stone, Clement A.	I2	Zhang, Jimming	J2
Paskus, Thomas S.	J1	Stout, William F.	L3	Zhang, Liru	L3
Patelis, Thanos	E1, N2	Strozeski, Mike	C2	Zumbo, Bruno D.	H3
Patsula, Liane N.	H2	Sullivan, Richard B.	J2	Zwick, Rebecca	I1
Patz, Richard J.	L3	Swaminathan, Hariharan	C3, D1, E3, O2		

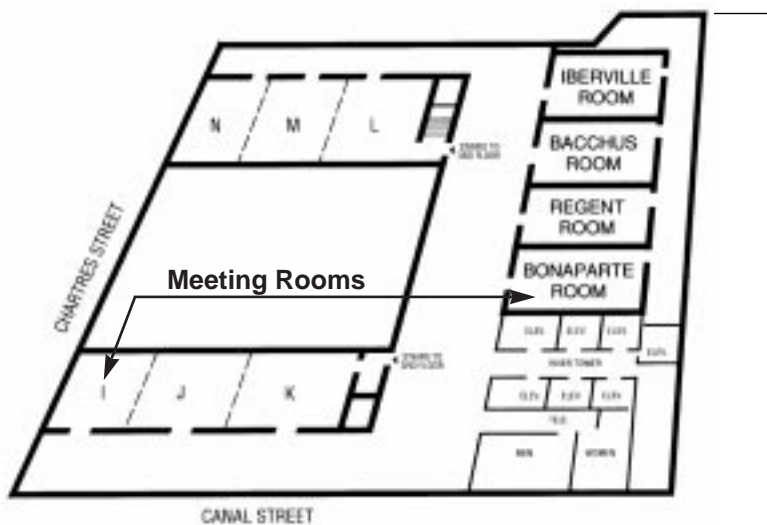
NEW ORLEANS MARRIOTT

555 Canal Street

Third Floor Meeting Rooms

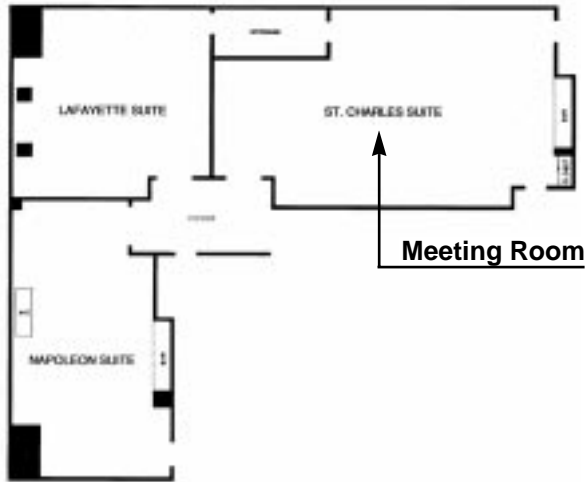


Fourth Floor Meeting Rooms



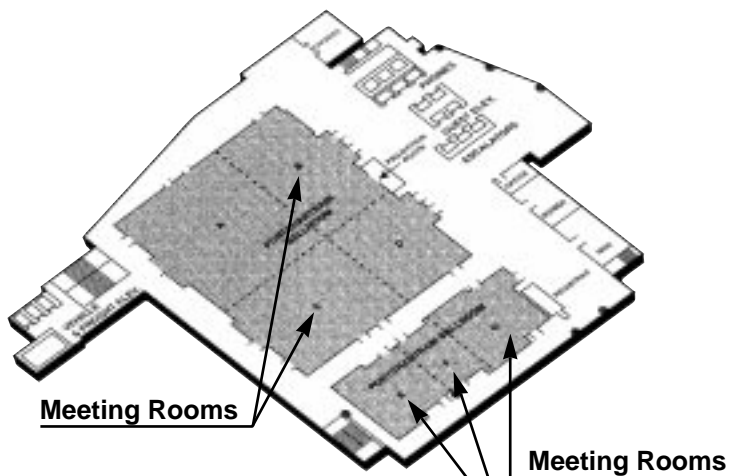
NEW ORLEANS MARRIOTT
555 Canal Street

41st Floor Suites

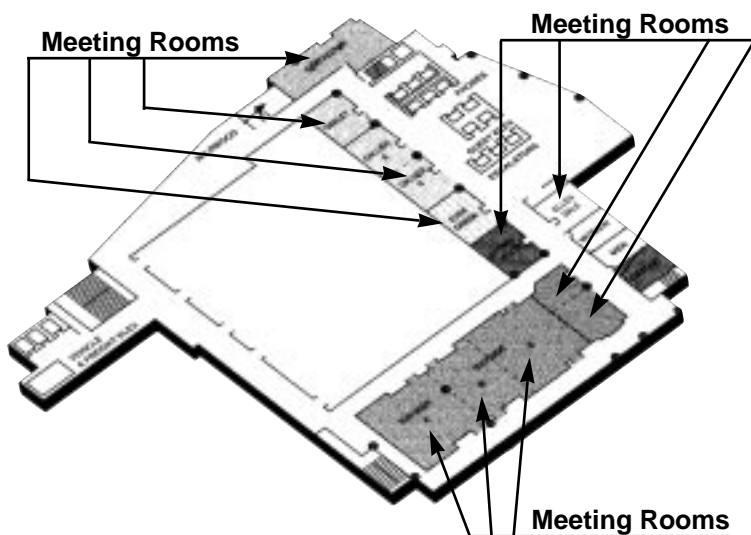


SHERATON NEW ORLEANS HOTEL
500 Canal Street

Third Floor Meeting Rooms



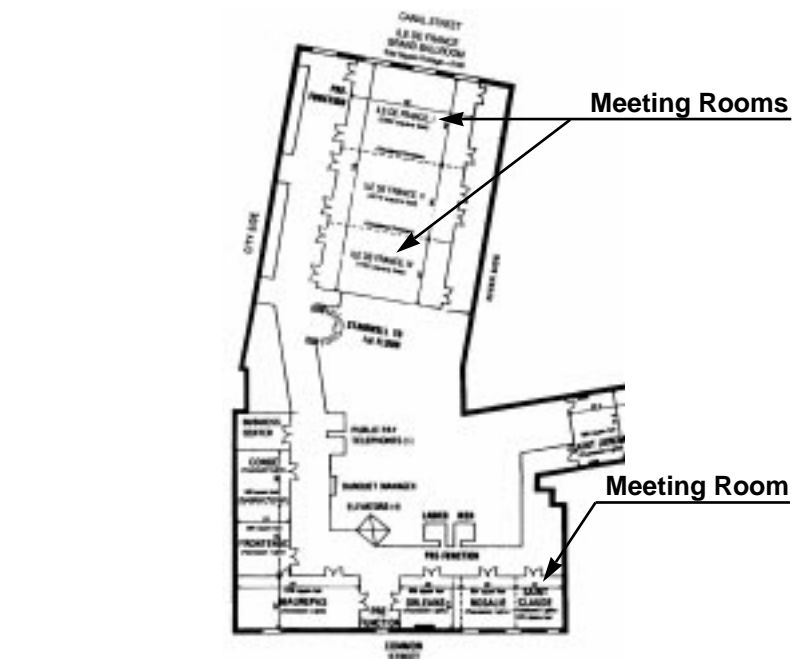
Fourth Floor Meeting Rooms



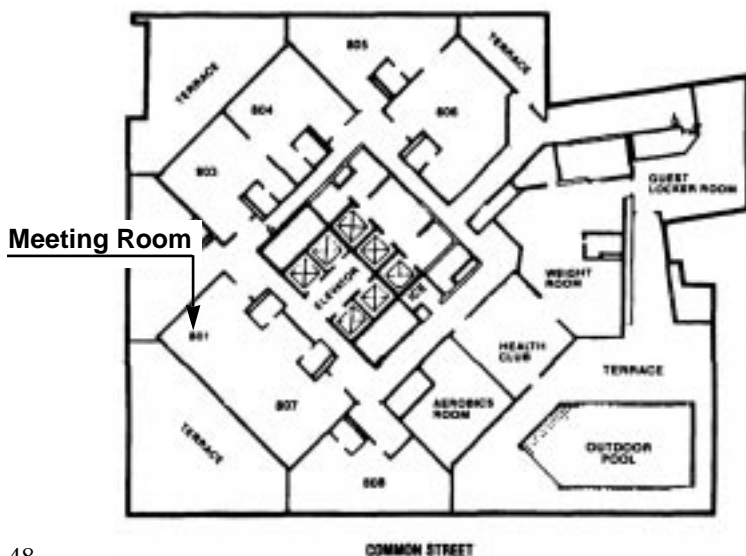
	<p>LE MERIDIEN NEW ORLEANS</p> <p>614 Canal Street</p>
--	--

	<p>LE MERIDIEN NEW ORLEANS</p> <p>614 Canal Street</p>
--	--

Third Floor Meeting Rooms



8th Floor Meeting Rooms





1230 17th Street NW
Washington, DC 20036-3078

NONPROFIT ORG.
US POSTAGE
PAID
SUBURBAN MD
PERMIT NO 7677